

Model PTM-0

Indoor/Outdoor Voltage Transformer
10 kV BIL, 600 V

Application

Designed for indoor service; suitable for operating meters, instruments, relays, and control devices.

Thermal Rating

55 °C Rise above 30 °C Ambient200 VA

Weight

(Approximate)

Unfused.....9.75 lbs

Reference Drawings

Outline0122C02910

Insulation Level

0.6 kV; BIL 10 kV full wave

Frequency

60 Hz



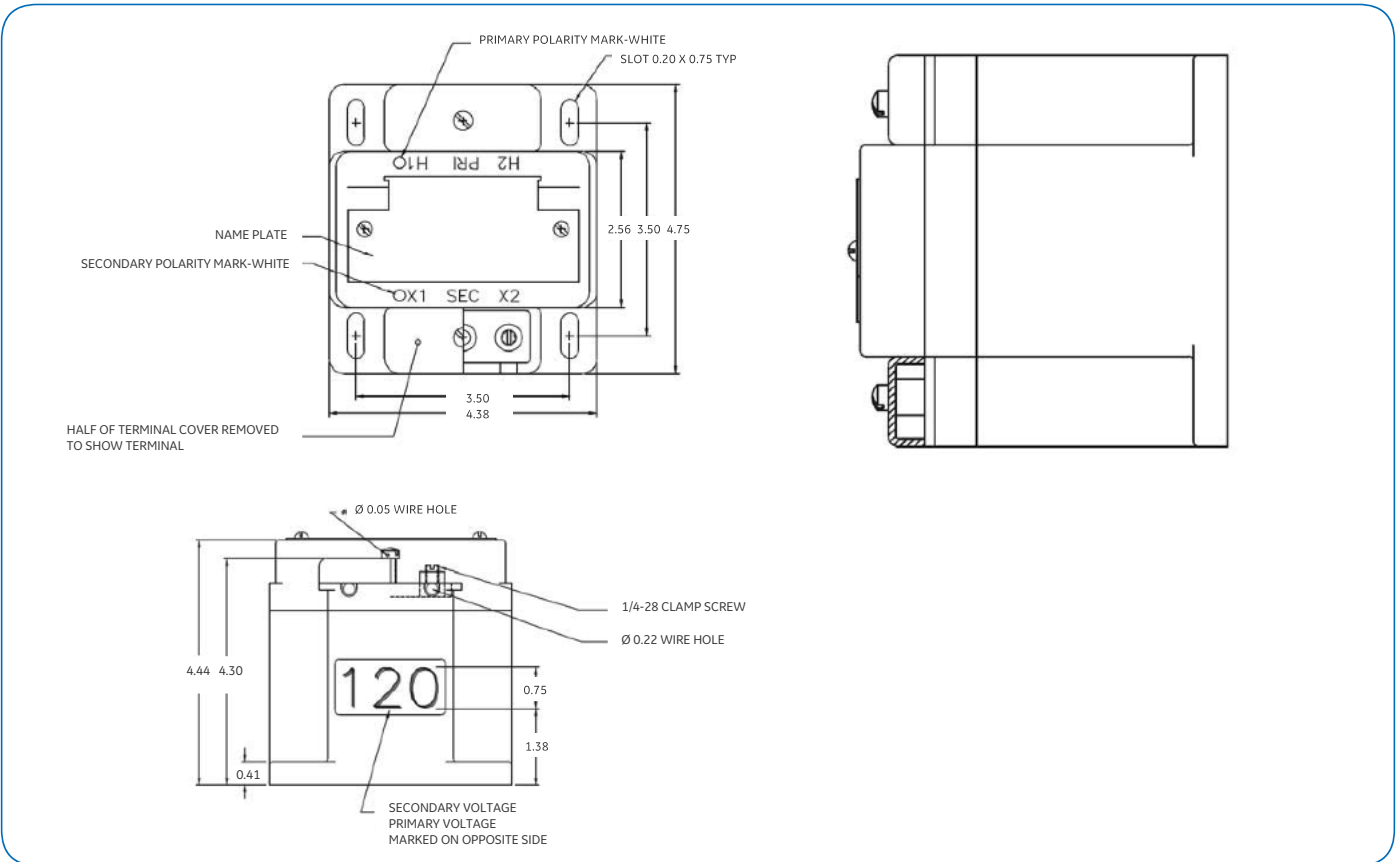
PTM-0

Transformer Rating		IEEE Accuracy Class, 60 Hz Burden per IEEE		Approval number from CCAC	Catalog Number
Primary Voltage	Ratio	W	X		
120	1:1	0.3	0.6	T-148-2	420-001
240	2:1	0.3	0.6	T-148-2	420-002
300	2.5:1	0.3	0.6	T-148-2	420-003
360	3:1	0.3	0.6	T-148	420-004
480	4:1	0.3	0.6	T-148-1	420-005
600	5:1	0.3	0.6	T-148	420-006

* For these models please contact factory for availability and approval number from CCAC for revenue metering application.



Model PTM-0 10 kV BIL, 600 V



Construction and Insulation

The core and coil are placed in a plastic shell made from GE Valox and encapsulated in a polyurethane.

Core and Coils

The primary and secondary coils are precision wound on an insulated spool. Once the coils are wound, a distributed gap, grain oriented silicone steel core is positioned through the center of and around the outside of this combined coil.

Primary Terminals

These compression terminals, identified as H1 and H2, are conveniently located on top of the transformer. They are fixed, tin plated, brass posts with holes to accommodate No. 6 to No. 14 wire sizes. The brass screws for securing wires to the posts are tin-plated.

Secondary Terminals

These compression terminals, identified as X1 and X2, are conveniently located on top of the transformer. They are fixed, tin plated, brass posts with holes to accommodate No.6 to No. 14 wire sizes. The brass screws for securing wires to the posts are tin-plated.

Nameplates

The nameplate is laser engraved aluminum. It is mounted on the top of the transformer. Provision is made for attaching the user's identifying tag.

Cover

A transparent, plastic terminal cover is furnished over the primary and secondary terminals. This cover provides a safe means of observing the electrical connections without requiring its removal.

Maintenance

These transformers require no maintenance other than occasional cleaning.

GEGridSolutions.com

ITI-Model-PTM-0-Spec-EN-2020-12-Grid-AIS-1491. © Copyright 2020. General Electric Company and Instrument Transformers LLC reserve the right to change specifications of described products at any time without notice and without obligation to notify any person of such changes.

Worldwide Contact Center

Web: www.GEGridSolutions.com/contact

Phone: +44 (0) 1785 250 070

USA and Canada: +1 (0) 800 547 8629

Europe, Middle East and Africa: +34 (0) 94 485 88 00

