

Model JKM-2

Indoor Current Transformer
2,500 V, BIL 45 kV, 10 A to 1,200 A, 50/60 Hz

Application

Designed for indoor service; Suitable for operating meters, instruments and control devices.

ANSI Meter

Accuracy Classification, 60 Hz

Meter Class Burden

B-0.1, B-0.2, and B-0.5; all models.....0.3

ANSI Relay

Accuracy Classification

Relay Class; all modelsT50

Weight - Shipping/Net

(approximate, in pounds)

Transformer.....18/16 lbs

Reference Drawings

Accuracy Curves:

10-300 and 600 A9689241690

400 and 800 A9689241700

Excitation Curves9689241331

Outline Drawing9689861

Wiring Diagramrefer to page 42, figure 4



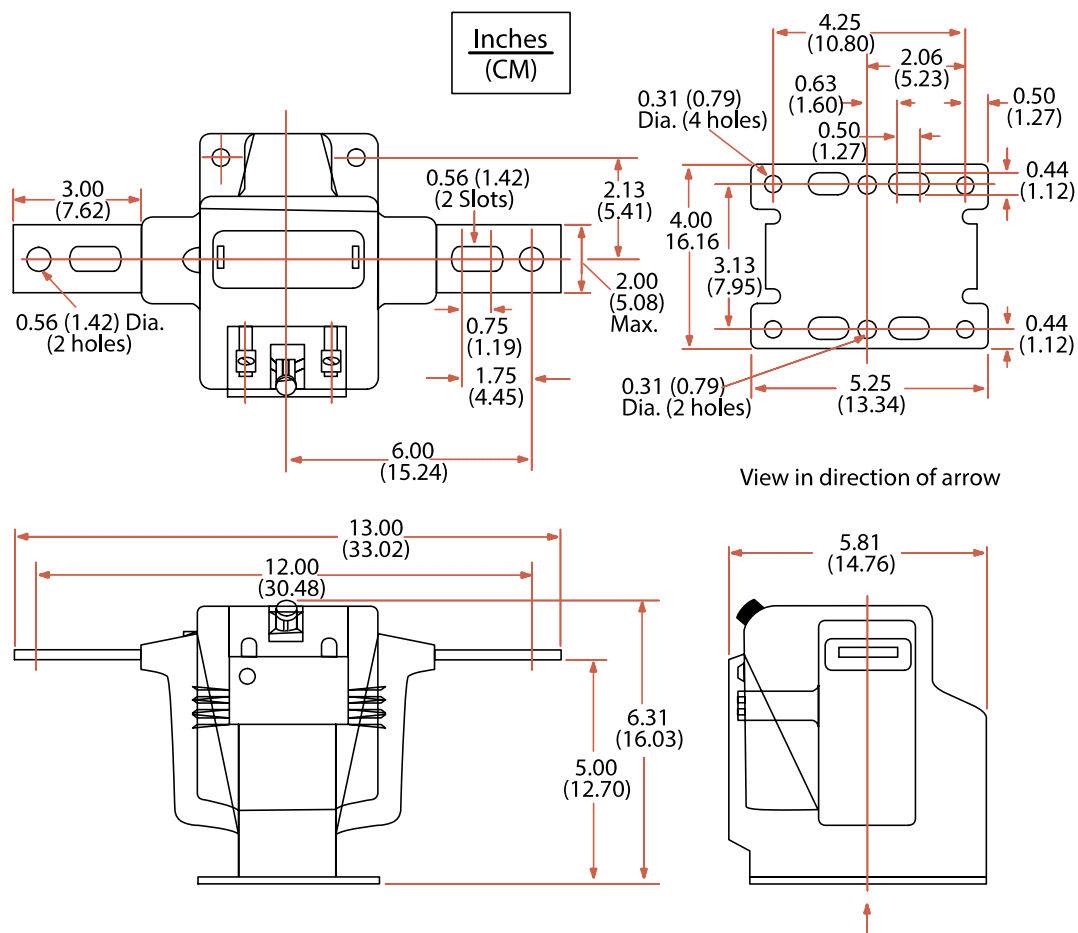
JKM-2 Current Transformer

JKM-2 Product Data

Current Ratio in Amperes; Pri:Sec	Continuous-Thermal Current Rating Factor		Mechanical Limit, Amperes	1-Sec. Thermal Limit, Amperes	Catalog Number
	30 °C Ambient	55 °C Ambient			
10:5	1.5	1.0	1,285	700	752X040001
15:5	1.5	1.0	1,260	1,050	752X040002
20:5	1.5	1.0	2,780	1,400	752X040003
25:5	1.5	1.0	3,700	1,750	752X040004
30:5	1.5	1.0	4,040	2,100	752X040005
40:5	1.5	1.0	5,340	2,800	752X040006
50:5	1.5	1.0	5,310	3,500	752X040007
75:5	1.5	1.0	8,950	5,250	752X040008
100:5	1.5	1.0	11,900	7,000	752X040009
150:5	1.5	1.0	18,350	12,000	752X040010
200:5	1.5	1.0	24,400	14,000	752X040011
300:5	1.5	1.0	36,700	22,500	752X040012
400:5	1.5	1.0	49,300	26,400	752X040013
600:5	1.5	1.0	104,000	56,400	752X040014
800:5	1.5	1.0	104,000	52,800	752X040015
1,200:5	1.0	0.75	108,000	56,400	752X040017



JKM-2 Dimensions



Construction and Insulation

Please refer to General Product Information, items 1.2 and 1.8.

Core

Please refer to General Product Information, item 2.4.

Coils

Please refer to General Product Information, item 3.6.

Primary Terminals

Please refer to General Product Information, item 4.3.

Secondary Terminals

Please refer to General Product Information, item 4.13.

Polarity

Please refer to General Product Information, item 7.2.

Baseplate and Mounting

Please refer to General Product Information, item 5.5.

Nameplate

Please refer to General Product Information, item 6.3.

Maintenance

Please refer to General Product Information, item 10.1 and pages 24-27.

GEGridSolutions.com

Grid-AIS-L4-ITL_Model_JKM_2-1459-2017_07-EN. © Copyright 2017. General Electric Company and Instrument Transformers LLC reserve the right to change specifications of described products at any time without notice and without obligation to notify any person of such changes.

Worldwide Contact Center

Web: www.GEGridSolutions.com/contact

Phone: +44 (0) 1785 250 070

USA and Canada: +1 (0) 800 547 8629

Europe, Middle East and Africa: +34 (0) 94 485 88 00

