

Model JAB-0C Multi-Tap

**Indoor Current Transformer 600 V, 10 kV BIL, 3,000 A
Window Size 4.50" x 3.50"**

Application

Designed for indoor service; especially designed for installation over the secondary bushings of pad mounted transformers. For mounting and application information, including use at higher voltages, and matching the current rating to the pad transformer thermal capability, please refer to the Applications Information section of catalog GEP-9186.

Weight

Approximately10.00 lbs

Reference Drawings

Outline0121C39871

Insulation Level

0.6 kV; BIL 10 kV full wave

Frequency

50-60 Hz



JAB-0C Multi-Tap Data Table

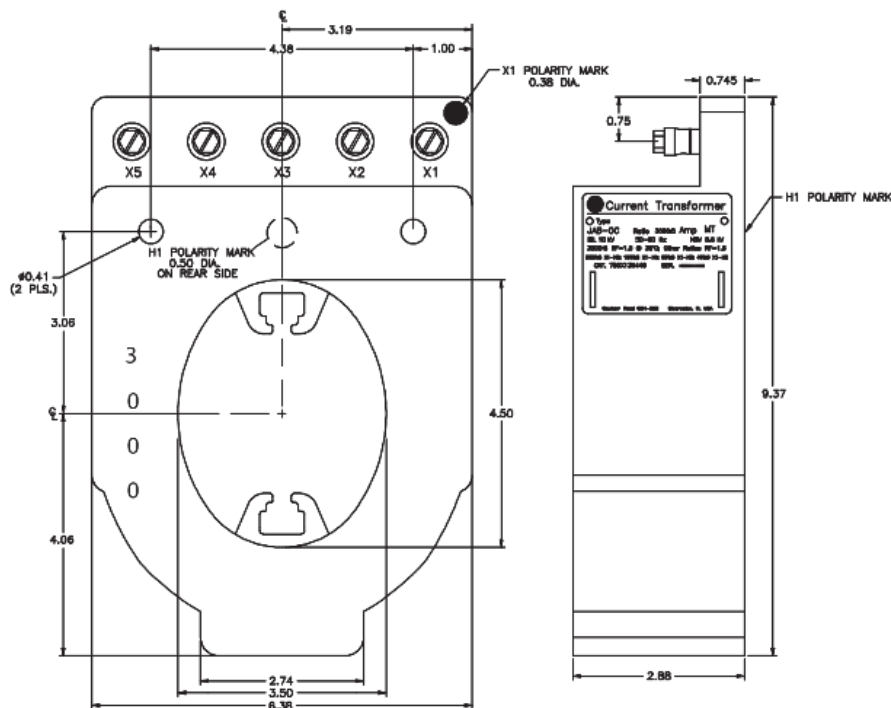
| Current Ratio (Amps) Pri : Sec | ANSI Accuracy Class, 60 Hz Burden Per ANSI | | | | | | Connection | Catalog Number |
|--------------------------------------|--|------|------|------|------|--------------|------------|----------------|
| | BO.1 | BO.2 | BO.5 | BO.9 | B1.8 | @ 30 °C Amb. | | |
| 400:5 | 0.3 | 0.3 | -- | -- | -- | 1.5 | 1.1 | X1-X2 |
| 800:5 | 0.3 | 0.3 | 0.3 | -- | -- | 1.5 | 1.1 | X1-X3 |
| 1,500:5 | 0.3 | 0.3 | 0.3 | 0.3 | -- | 1.5 | 1.1 | X1-X4 |
| 3,000:5 | 0.3 | 0.3 | 0.3 | 0.3 | 0.3 | 1.0 | 0.7 | X1-X5 |

750X136449

No shorting device available.



JAB-OC Multi-Tap Dimensions



Construction and Insulation

The core and coil assembly is encapsulated and cast in polyurethane resin. The material has excellent electrical and mechanical properties over a wide temperature range, and is UV resistant. The intended application for this CT is in a secure location where terminal covers and sealing provisions are not required, preferably the locked secondary compartment of a pad-mount transformer.

Core and Coils

The core is made from high quality grain oriented silicon steel, annealed under rigidly controlled factory conditions. The secondary winding is made of heavy enameled copper wire. The secondary windings are evenly distributed around the core for maximum accuracy and resistance to stray fields from adjacent conductors.

Terminals

Secondary terminals are tin plated brass, compression type with a 0.275" diameter cross-hole for wiring and a 1/4-28 clamp screw.

Polarity

H1 and X1 are identified by white dots. Secondary terminals are labeled X5, X4, X3, X2, X1.

Nameplates

The nameplate is laser engraved aluminum. It is attached to the side of the unit and has provision for attaching the user's identifying tag. The nominal current rating is on both faces of the unit in large numerals.

Mounting

The transformer can be mounted in any position but is usually installed on the pad mount transformer terminal blade using the "grabbers". The transformer also has two mounting holes allowing it to be attached to a mounting bracket.

Maintenance

These transformers require no maintenance, other than occasional cleaning, if installed where air contamination is severe.

GEGridSolutions.com

Grid-AIS-L4-ITL_Model_JAB_OC_MT-1376-2017_07-EN. © Copyright 2017. General Electric Company and Instrument Transformers LLC reserve the right to change specifications of described products at any time without notice and without obligation to notify any person of such changes.

Worldwide Contact Center

Web: www.GEGridSolutions.com/contact

Phone: +44 (0) 1785 250 070

USA and Canada: +1 (0) 800 547 8629

Europe, Middle East and Africa: +34 (0) 94 485 88 00

