

Models 543, 544, 545, 546, 547, 548

Current Transformers
Window Sizes 0.53" x 1.53", 0.53"x 3.03", 0.53"x 4.03"

Application

Relaying and metering.

Frequency

60 Hz.

Insulation Level

600 Volts, 10 kV BIL full wave.

**Continuous Thermal
Current Rating Factor**

1.33 at 30 °C. amb.,
1.0 at 55 °C. amb.

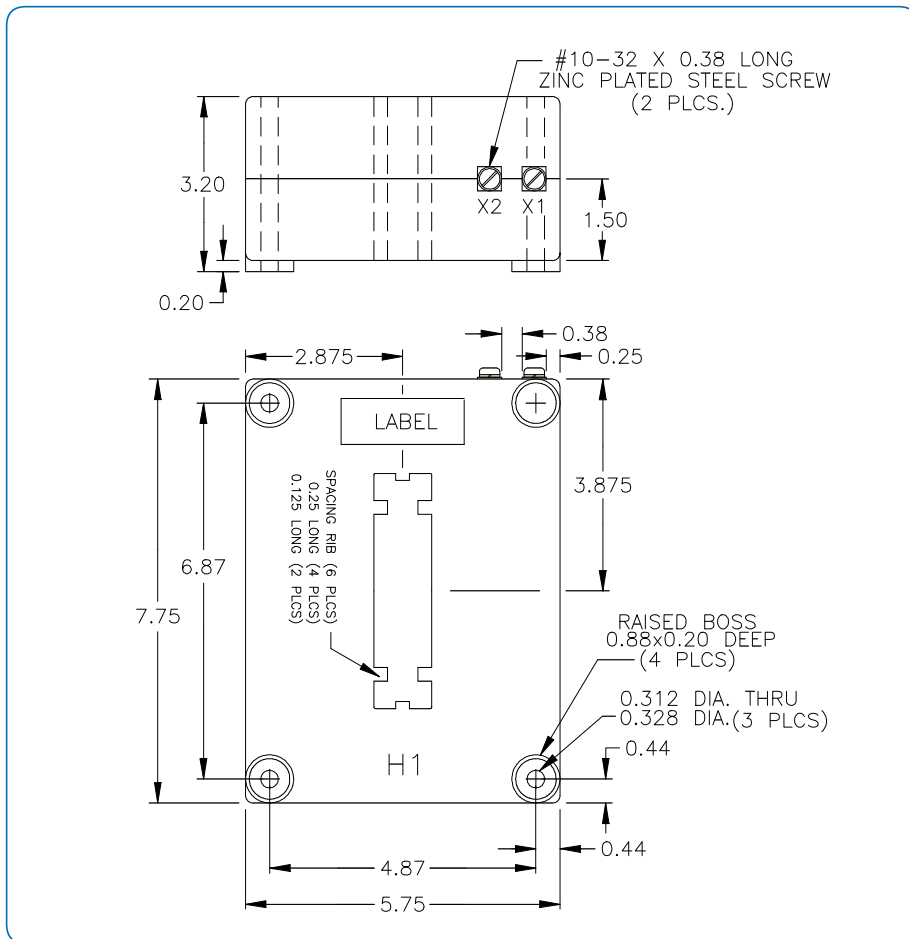
Terminals are No. 10-32 plated steel screws with one flatwasher and lockwasher.

Cast resin construction.

Approximate weight 15-20 lbs.

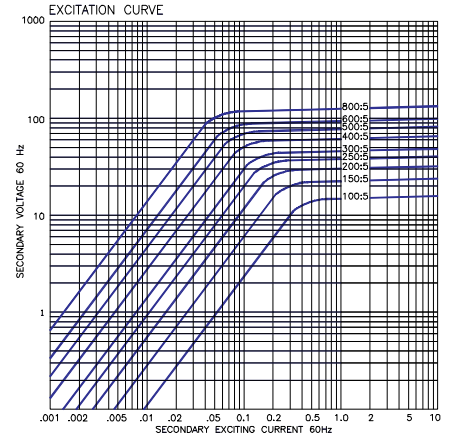


REGULATORY AGENCY APPROVALS



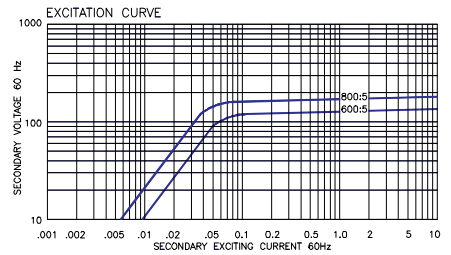
Model 543 - Window Size 0.53" X 1.53"

Catalog Number	Current Ratio	Relay Class	ANSI Metering Class at 60 Hz		Secondary Winding Resistance (Ω @ 75 °C)
			B0.1	B0.2	
543-101	100:5	C10	1.2	2.4	0.045
543-151	150:5	C20	0.6	1.2	0.053
543-201	200:5	C20	0.6	0.6	0.089
543-251	250:5	C20	0.3	0.6	0.112
543-301	300:5	C20	0.3	0.3	0.134
543-401	400:5	C50	0.3	0.3	0.142
543-501	500:5	C50	0.3	0.3	0.281
543-601	600:5	C50	0.3	0.3	0.337
543-801	800:5	C50	0.3	0.3	0.564



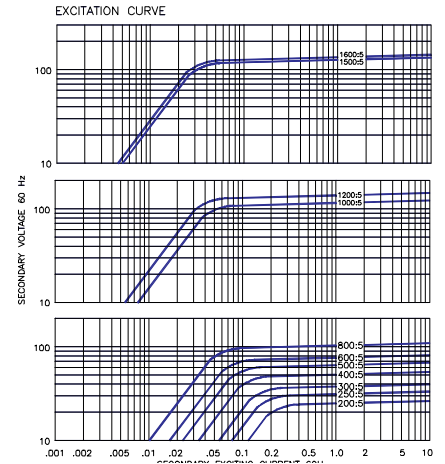
Model 544 - Window Size 0.53" X 1.53"

Catalog Number	Current Ratio	Relay Class	ANSI Metering Class at 60 Hz		Secondary Winding Resistance (Ω @ 75 °C)
			B0.1	B0.2	
544-601	600:5	C100	0.3	0.3	0.398
544-801	800:5	C100	0.3	0.3	0.666



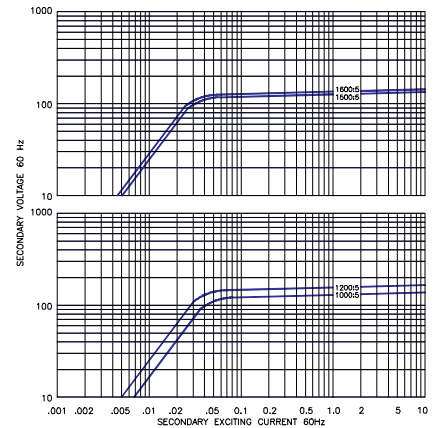
Model 545 - Window Size 0.53" X 3.03"

Catalog Number	Current Ratio	Relay Class	ANSI Metering Class at 60 Hz		Secondary Winding Resistance (Ω @ 75 °C)
			B0.1	B0.2	
544-201	200:5	C10	0.6	1.2	0.089
544-251	250:5	C10	0.6	1.2	0.112
544-301	300:5	C20	0.6	0.6	0.134
544-401	400:5	C20	0.3	0.6	0.179
544-501	500:5	C20	0.3	0.3	0.281
544-601	600:5	C20	0.3	0.3	0.337
544-801	800:5	C50	0.3	0.3	0.450
545-102	1000:5	C50	0.3	0.3	0.522
545-122	1200:5	C50	0.3	0.3	0.627
545-152	1500:5	C50	0.3	0.3	0.601
545-162	1600:5	C50	0.3	0.3	0.641



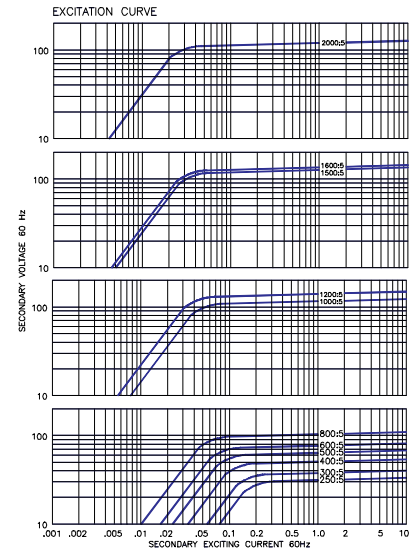
Model 546 - Window Size 0.53" X 3.03"

Catalog Number	Current Ratio	Relay Class	ANSI Metering Class at 60 Hz		Secondary Winding Resistance (Ω @ 75 °C)
			B0.1	B0.2	
546-102	1,000:5	C100	0.3	0.3	0.446
546-122	1,200:5	C100	0.3	0.3	0.675
546-152	1,500:5	C100	0.3	0.3	0.480
546-162	1,600:5	C100	0.3	0.3	0.512



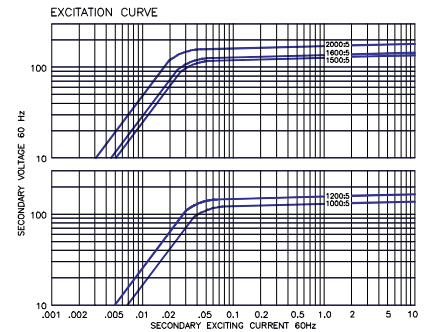
Model 547 - Window Size 0.53" X 4.03"

Catalog Number	Current Ratio	Relay Class	ANSI Metering Class at 60 Hz		Secondary Winding Resistance (Ω @ 75 °C)
			B0.1	B0.2	
547-251	250:5	C10	0.6	1.2	0.112
547-301	300:5	C20	0.6	0.6	0.134
547-401	400:5	C20	0.3	0.6	0.179
547-501	500:5	C20	0.3	0.3	0.281
547-601	600:5	C20	0.3	0.3	0.337
547-801	800:5	C50	0.3	0.3	0.450
547-102	1,000:5	C50	0.3	0.3	0.522
547-122	1,200:5	C50	0.3	0.3	0.627
547-152	1,500:5	C50	0.3	0.3	0.601
547-162	1,600:5	C50	0.3	0.3	0.641
547-202	2,000:5	C50	0.3	0.3	0.513



Model 548 - Window Size 0.53" X 4.03"

Catalog Number	Current Ratio	Relay Class	ANSI Metering Class at 60 Hz		Secondary Winding Resistance (Ω @ 75 °C)
			B0.1	B0.2	
548-102	1,000:5	C100	0.3	0.3	0.446
548-122	1,200:5	C100	0.3	0.3	0.675
548-152	1,500:5	C100	0.3	0.3	0.480
548-162	1,600:5	C100	0.3	0.3	0.512
548-202	2,000:5	C100	0.3	0.3	0.640



GEGridSolutions.com

Grid-AIS-L4-ITL_Models_543_548-1314-2017_05-EN. © Copyright 2017. General Electric Company and Instrument Transformers LLC reserve the right to change specifications of described products at any time without notice and without obligation to notify any person of such changes.

Worldwide Contact Center

Web: www.GEGridSolutions.com/contact

Phone: +44 (0) 1785 250 070

USA and Canada: +1 (0) 800 547 8629

Europe, Middle East and Africa: +34 (0) 94 485 88 00

