



# Indoor/Outdoor Voltage Transformer

## Model PTM-O 10kV BIL, 600V



### APPLICATION

Designed for indoor and outdoor service; suitable for operating meters, instruments, relays and control devices.

### THERMAL RATING (VOLT-AMPERES)

55°C Rise above 30°C Ambient .....200 VA

### WEIGHT (Approximate)

Unfused .....9.75 lbs

### REFERENCE DRAWINGS

Outline .....0122C02910

### INSULATION LEVEL

0.6kV; BIL 10kV full wave

### FREQUENCY

60 Hz

**PTM-O DATA TABLE**

Transformer Rating		IEEE Accuracy Class, 60 Hz. Burden per IEEE		Approval number from CCAC	Catalog Number
Primary Voltage	Ratio	W	X		
120	1:1	0.3	0.6	T-148-2	420-001
240	2:1	0.3	0.6	T-148-2	420-002
300	2.5:1	0.3	0.6	T-148-2	420-003
360	3:1	0.3	0.6	T-148	420-004
480	4:1	0.3	0.6	T-148-1	420-005
600	5:1	0.3	0.6	T-148	420-006

\* For these models please contact factory for availability and approval number from CCAC for revenue metering application.

## Construction and Insulation

The core and coil are placed in a plastic shell made from GE Valox and encapsulated in a polyurethane.

## Core & Coil

The primary and secondary coils are precision wound on an insulated spool. Once the coils are wound, a distributed gap, grain oriented silicone steel core is positioned through the center of and around the outside of this combined coil.

## Primary Terminals

These compression terminals, identified as H1 and H2, are conveniently located on top of the transformer. They are fixed, tin plated, brass posts with holes to accommodate No. 6 to No. 14 wire sizes. The brass screws for securing wires to the posts are tin-plated.

## Secondary Terminals

These compression terminals, identified as X1 and X2, are conveniently located on top of the transformer. They are fixed, tin plated, brass posts with holes to accommodate No. 6 to No. 14 wire sizes. The brass screws for securing wires to the posts are tin-plated.

## Nameplates

The nameplate is laser engraved aluminum. It is mounted on the top of the transformer. Provision is made for attaching the user's identifying tag.

## Cover

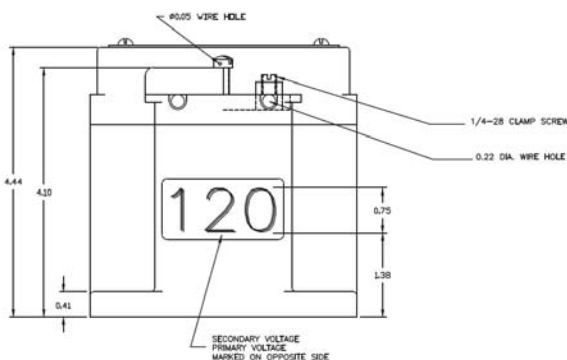
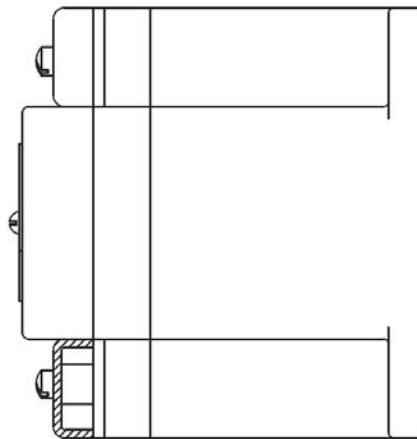
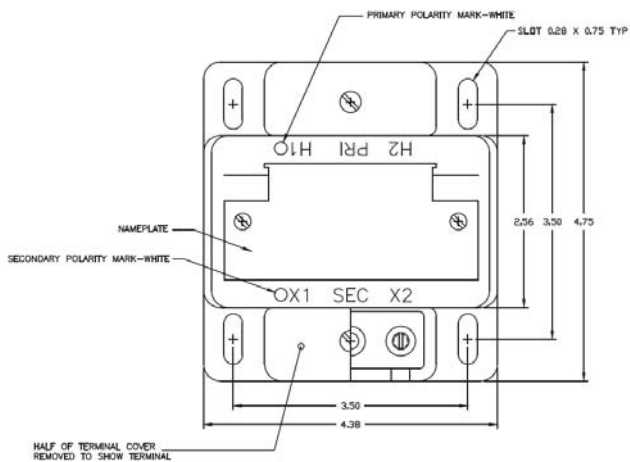
A transparent, plastic terminal cover is furnished over the primary and secondary terminals. This cover provides a safe means of observing the electrical connections without requiring its removal.

## Maintenance

These transformers require no maintenance, other than occasional cleaning.

Data subject to change without notice

To purchase or obtain more information about GE Instrument Transformer products, please call GE Multilin at 1-800-547-8629. Product information is also available on our web site at <http://www.GEDigitalenergy.com>. Click on the Product Index button (right column), select Transformers and follow the menus to **Product Information** or a **Solutions Advisor**.



## USA, Canada, Asia, Latin America

Tel: +1-800-547-8629

Fax: +1-905-201-2455

e-mail: [sales.multilin@ge.com](mailto:sales.multilin@ge.com)

## Europe, Middle East, Africa

Tel: +34-94-485-88-00

Fax: +34-94-485-88-45

e-mail: [gmultilin.euro@ge.com](mailto:gmultilin.euro@ge.com)