

Model 309

Current Transformer Window Diameter 5.75"

Application

Relaying and metering.

Frequency

50-400 Hz.

Insulation Level

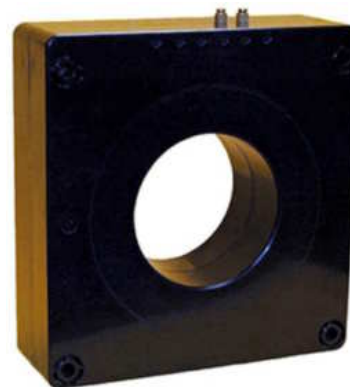
600 Volt, 10 kV BIL full wave.

Terminals are brass screws No. 10-32 with one flatwasher and lockwasher.

Order mounting bracket kit 0221B01525 separately.

Multi-ratios available on request.

Approximate weight 62 lbs.



REGULATORY AGENCY APPROVALS
 E93779  LR89403
 Manufactured to meet the requirements of ANSI/IEEE C57.13.
 Classified by U.L. in accordance with IEC 44-1

Model 309

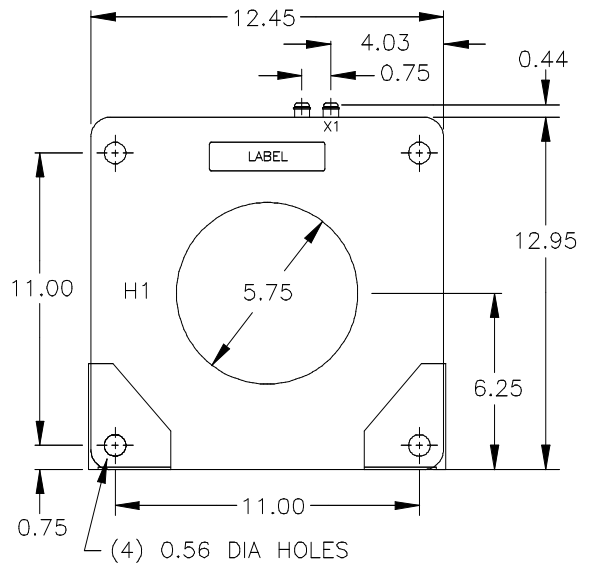
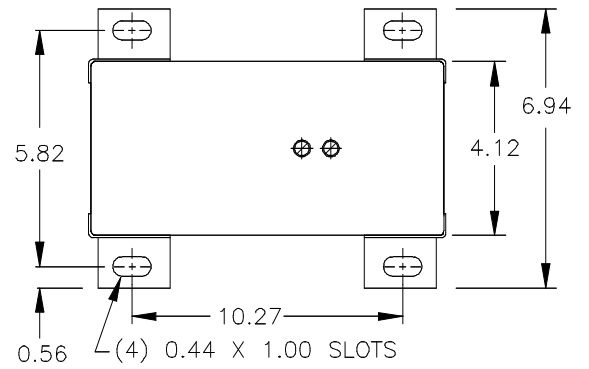
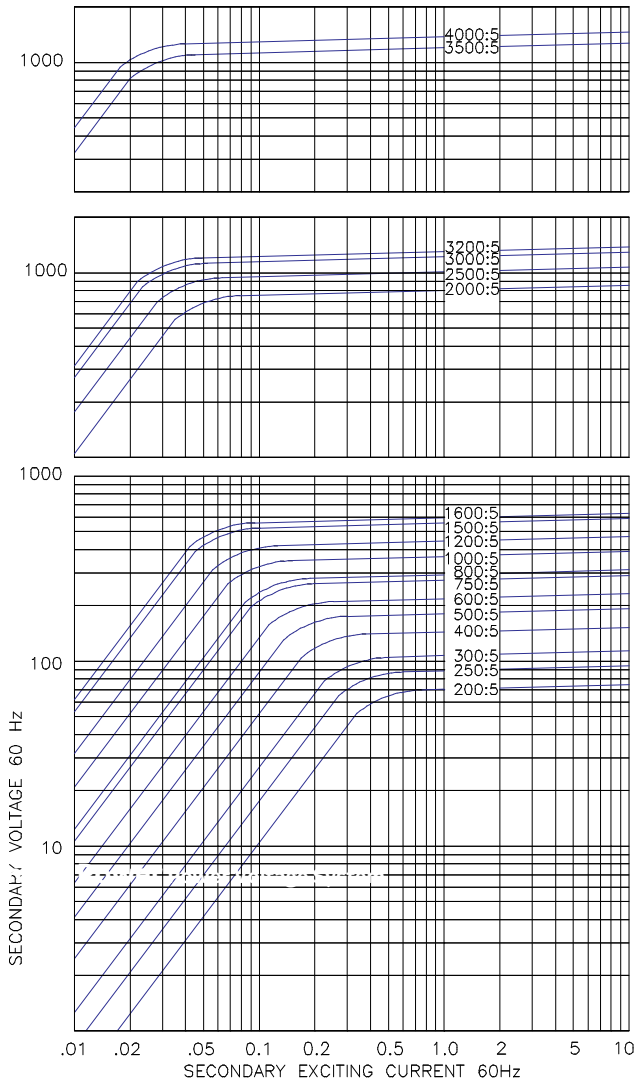
Catalog Number	Current Ratio	Relay Class	ANSI Metering Class at 60 Hz					Secondary Winding Resistance (Ω@ 75 °C)	Continuous Thermal Rating Factor	
			B0.1	B0.2	B0.5	B0.9	B1.8		@ 30 °C	@ 55 °C
309-201	200:5	C50	0.3	0.6	1.2	1.2	2.4	0.141	2.0	2.0
309-251	250:5	C50	0.3	0.3	0.6	1.2	1.2	0.177	2.0	2.0
309-301	300:5	C100	0.3	0.3	0.6	0.6	1.2	0.212	2.0	2.0
309-401	400:5	C100	0.3	0.3	0.3	0.3	0.6	0.283	2.0	2.0
309-501	500:5	C100	0.3	0.3	0.3	0.3	0.6	0.354	2.0	2.0
309-601	600:5	C200	0.3	0.3	0.3	0.3	0.3	0.424	2.0	2.0
309-751	750:5	C200	0.3	0.3	0.3	0.3	0.3	0.530	2.0	1.5
309-801	800:5	C200	0.3	0.3	0.3	0.3	0.3	0.566	2.0	1.5
309-102	1,000:5	C200	0.3	0.3	0.3	0.3	0.3	0.707	2.0	1.5
309-122	1,200:5	C400	0.3	0.3	0.3	0.3	0.3	0.849	2.0	1.5
309-152	1,500:5	C400	0.3	0.3	0.3	0.3	0.3	1.061	1.5	1.33
309-162	1,600:5	C400	0.3	0.3	0.3	0.3	0.3	1.132	1.5	1.0
309-202	2,000:5	C800	0.3	0.3	0.3	0.3	0.3	1.464	1.5	1.0
309-252	2,500:5	C800	0.3	0.3	0.3	0.3	0.3	1.830	1.33	1.0
309-302	3,000:5	C800	0.3	0.3	0.3	0.3	0.3	2.196	1.0	0.8
309-322	3,200:5	C800	0.3	0.3	0.3	0.3	0.3	2.342	1.0	0.8
309-352	3,500:5	C800	0.3	0.3	0.3	0.3	0.3	2.421	1.0	0.8
309-402	4,000:5	C800	0.3	0.3	0.3	0.3	0.3	2.766	1.0	0.8

Approved for revenue metering by Industry Canada No. AE-0661



Model 309

EXCITATION CURVE



Model 309MR

Current Transformer with Multi-Ratio Window Diameter 5.75"

Application

Relaying.

Frequency

50-400 Hz.

Insulation Level

600 Volt, 10 kV BIL full wave.

Terminals are brass screws No. 10-32 with one flatwasher and lockwasher.

The transformer winding is arranged so that the turns are fully distributed between all taps.

Order mounting bracket kit 0221B01525 separately.

Approximate weight 62 lbs.

Excitation data available upon request.



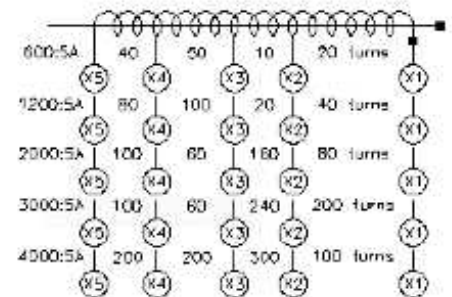
Model 309MR

Catalog Number	Relay Class	Continuous Thermal Rating Factor	
		@ 30 °C	@ 55 °C
309-601MR	C200	2.0	2.0
309-122MR	C400	2.0	1.5
309-202MR	C800	1.5	1.0
309-302MR	C800	1.0	0.8
309-402MR	C800	1.0	0.8

REGULATORY AGENCY APPROVALS

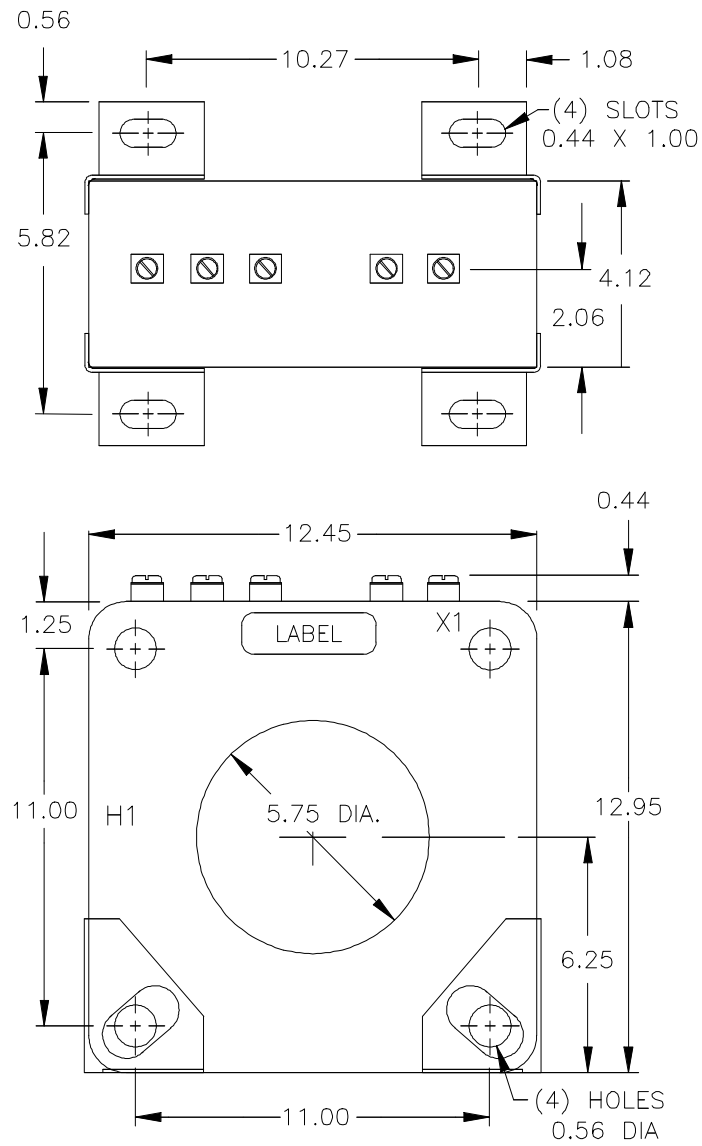
UL E93779 **SP** LR89403

Manufactured to meet the requirements of ANSI/IEEE C57.13. Classified by U.L. in accordance with IEC 44-1



CONNECTION DIAGRAM

Model 309MR



GEGridSolutions.com

ITI-Model-309-Spec-EN-2021-01-Grid-AIS-1294. © Copyright 2021, General Electric Company and Instrument Transformers LLC reserve the right to change specifications of described products at any time without notice and without obligation to notify any person of such changes.

Worldwide Contact Center

Web: www.GEGridSolutions.com/contact

Phone: +44 (0) 1785 250 070

USA and Canada: +1 (0) 800 547 8629

Europe, Middle East and Africa: +34 (0) 94 485 88 00

