

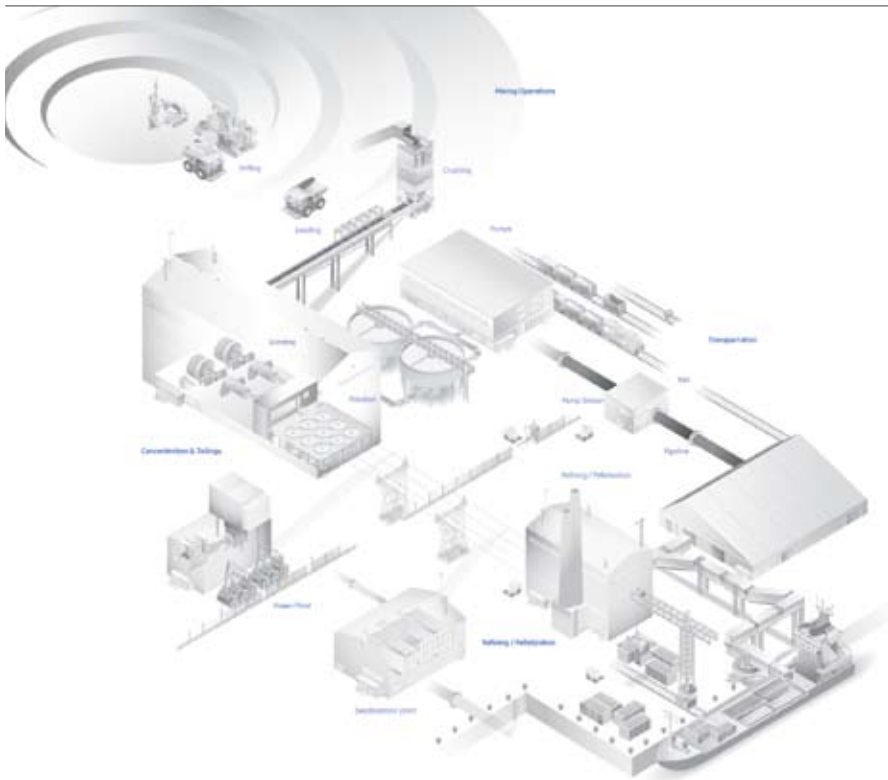
MINING

PROLEC ®

Powering reliable solutions for you

Experience in the industry

Prolec GE manufactures a complete line of electrical distribution transformers, with a long experience on different applications for the Mining Industry, designing its products according to the particular environment and technical requirements for heavy duty conditions.



Transformers for...

- Crushing processes
- Grinding processes
- Flotation processes
- Refining / Pelletization

Photo courtesy of GE Mining.

Product scope

- Ratings up to 15 MVA
- High voltage up to 34.5 kV
- Low voltage from 4.16 kV to 13.2 kV
- Cooling: single and double stage cooling with overload capabilities ONAN, ONAN/ONAF, ONAN/ONAF + 12%, ONAN/ONAF/ONAF, ONAN/ONAF/ONAF + 12% (28 MVA maximum capacity)
- Temperature rise 55° C, 65° C, 55/65° C, 45° C
- Delta – Wye connection
- ANSI and special impedances up to 12 %
- Hydran provision
- Externally operated de-energized tap changer with (2) 2.5% full capacity taps above and below nominal
- Primary Substation Transformer (Industrial PST)
 - Up to 40 MVA nominal capacity
 - High Voltage from 60 kV to 138 kV
 - Low Voltage from 12 kV to 34.5 kV
 - On-Load Tap Changer (optional)
 - Up to three cooling stages
 - Temperature rise 55/65° C
 - With or without conservator tank
- Secondary Substation Transformer (SST)
 - Up to 15 MVA nominal capacity
 - High Voltage up to 34.5 kV
 - Low Voltage from 4.16 kV to 13.2 kV
 - One and two cooling stages with overload capacity (28 MVA maximum capacity)
 - Temperature rise 55° C, 65° C, 55/65° C, 45° C
 - Delta - Wye connection
 - Special impedances and ANSI up to 12%
 - Hydran provision
 - De-energized Tap Changer with 2.5% on each step

Solutions for...

Corrosive environments

Coatings specially designed to operate on several conditions for the Mining Industry, with high humidity content, ultraviolet radiation and chemical pollution or saline fog.

- Corrosive environments painting
 - > Riched zinc primer epoxy
 - > Epoxy catalyzed intermediate. coating
 - > High solids polyurethane top coating

- Stainless steel radiators (optional)



High mean sea level

Design adapted for strip mines operating on high mean sea level conditions.

- > Up to 4500 meters over mean sea level (OMSL)

Seismic conditions

Attending common location of mining operations which are in seismic regions, our “Seismic Certified Transformers” (IBC) are designed and manufactured in order to successfully operate under an earthquake event.

- > Mechanically reinforced to operate with an importance factor of 1 and 1.5



Uneven surfaces installation

Adapted to operate on a tilted area maintaining the bushings immersed in oil.



Standards and certifications:



Main Offices

Monterrey, N.L., Mexico

Blvd. Carlos Salinas de Gortari
Km. 9.25 Apodaca, N.L.
66600 Mexico
Tel: +52 (81) 8030-2000, +52 (81) 8030-2400
Fax: +52 (81) 8030-2500

Sales & Service Offices

Mexico City

Paseo de la Reforma No. 222 - 8vo. Piso
Col. Juarez, Delegacion Cuauhtemoc, C.P. 06500
Mexico, D.F.
Tel: +52 (55) 5329-2700
01-800-377-6532
Fax: +52 (55) 5329-2727

USA & Canada

Contact your local GE sales representative or call
1-800-437-7653 or +52 (81) 8030-2341

Latinamerica

Call +52 (81) 8030-2400 (Spanish) +52 (81) 8030-2341 (English)
Fax: +52 (81) 8030-2323 or 2325

ADDITIONAL CONTACT INFORMATION:

See your local GE sales representative or visit our website

www.prolecge.com

or email

sales@prolecge.com

services@prolecge.com



Powering reliable solutions for you