



# Instrument Transformers

## Low Voltage Current Transformers

600 Volt Class - Indoor Type

731



## Low Voltage Potential Transformers

600 Volt Class - Indoor Type

735



## Bushing Current Transformers

600 Volt Class

736



## Medium Voltage Current & Voltage Transformers

5kV to 38kV - Indoor type

737





# Instrument Transformers

## Control Power Transformers

5kV to 38kV - Indoor type

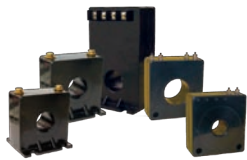
738



## Current Transducers

600 Volt Class

739



## IEC - Rated Instrument Transformers (Indoor/Outdoor)

739



## LOW VOLTAGE CURRENT TRANSFORMERS

### Split Core Current Transformers



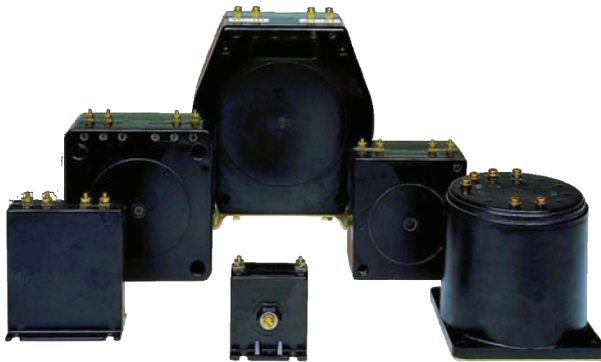
#### Applications

- Energy management
- Load surveys
- Sub metering

#### Features

- Window sizes from 0.75 x 0.75 to 12 x 30 inches
- Ratios from 100:5A to 10,000:5A
- Voltage output available
- Weather proof model available
- UL Recognized and CSA Approved

### Auxiliary Current Transformers



#### Applications

- Designed for use in the secondary of main current transformers to change the ratio for metering or relaying applications

#### Features

- Several models available
- Wound primary up to 50A
- IEEE or IEC metering and relay class
- Summation CT's up to six secondaries
- UL Recognized and CSA Approved

### Three Phase Current Transformers



#### Applications

- Three phase metering and motor overload protection

#### Features

- Over 50 models available
- Saves space and reduces installation time
- Zero sequence core in the same package available for most models
- Ratios from 50:5A to 4000:5A
- UL Recognized and CSA Approved

## Current Transformers



### Applications

- For use with ammeters in panelboards, control panels and engine generators

### Features

- Wide range of window sizes
- Ratios 50:5A to 2000:5A
- 1 Amp secondaries are available
- Supplied with leads or terminals
- Integral feet or mounting brackets available
- UL Listed and CSA Approved

## Current Transformers



### Applications

- For metering and relaying applications in low voltage switchboards, switchgear and motor control

### Features

- Wide range of window sizes
- Ratios 50:5A to 6000:5A
- 1 Amp secondaries are available
- Supplied with leads or terminals
- Multi ratios model available
- Designed to meet IEEE C57. 13 or IEC 60044-1
- UL listed and CSA Approved

## Current Transformers



### Applications

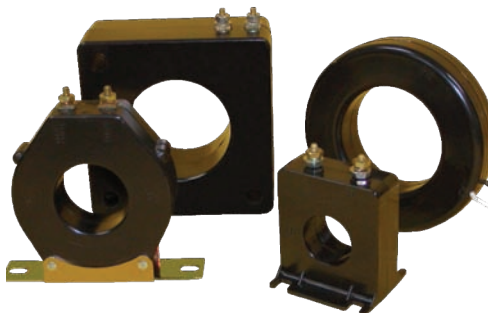
- Designed for specific mount applications in low and medium voltage switchgear

### Features

- Wide range of window sizes
- Ratios 50:5A to 6000:5A
- 1 Amp secondaries are available
- Multi ratios model available
- Designed to meet IEEE C57. 13
- UL listed and CSA Approved

## LOW VOLTAGE CURRENT TRANSFORMERS (CONT.)

### Current Transformers



#### Applications

- For ammeters, wattmeters, and cross current compensation applications

#### Features

- Wide range of window sizes
- Ratios 50:5A to 6000:5A
- 1 Amp secondaries are available
- Supplied with leads or terminals
- Integral feet or mounting brackets available
- UL Listed and CSA Approved

### Ground Fault Sensors



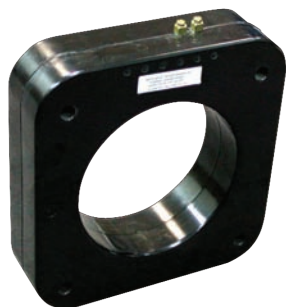
#### Applications

- To sense zero sequence ground fault currents

#### Features

- Window sizes up to 30x 10 inches are available
- Ratios 50:5A and up
- Special ratios and physical sizes built to customer specifications
- UL Recognized and CSA Approved

### Ground Fault Sensors Type HGF



#### Applications

- Designed to match the ground fault input of GE Multilin motor protection relays

#### Features

- Window sizes 3.75" , 5.75" or 8.13"
- Ratio 50:0.025A 60 Hz
- IEC versions also available
- UL and CUL recognized

## Current Transformers



### Applications

- Designed for operation of meters and instruments
- Utility metering
- Mounts directly on busbars or padmount transformer spade

### Features

- Window sizes 3.46" x 4.16"
- Ratios 200:5 to 4000:5
- Meet ANSI C12 size and mounting

## Current Transformers



### Applications

- Designed for operation of meters and instruments
- Utility metering small window

### Features

- Designed for outdoor service
- Encapsulated in cast polyurethane resin
- Compression type terminals
- Ratios from 100:5A to 800:5A
- Dual ratio models available
- Engraved aluminum name plate
- Meet ANSI C12 size and mounting

## Current Transformers



### Applications

- Designed for operation of meters and instruments
- Utility metering large window

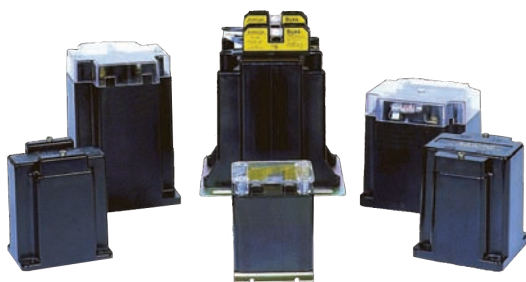
### Features

- Designed for outdoor service
- Compression type terminals
- Ratios from 200:5A to 4000:5A
- Dual ratio models available
- Engraved aluminum name plate
- Meet ANSI C12 size and mounting



## LOW VOLTAGE POTENTIAL TRANSFORMERS

### Voltage Transformers



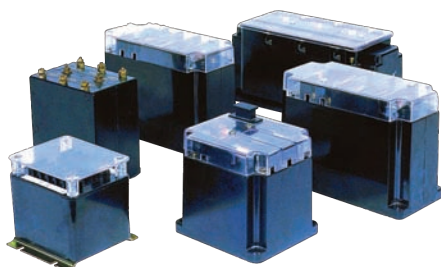
#### Applications

- For single phase voltage measurement in AC power systems

#### Features

- Resin cast moulded plastic cases
- Integral fuses available on some models
- Designed to meet IEEE C57.13
- 50Hz design available
- UL Recognized and CSA Approved

### Voltage Transformers



#### Applications

- For three phase voltage measurement in AC power systems

#### Features

- Resin cast moulded plastic cases
- Integral fuses available on some models
- Designed to meet IEEE C57.13
- 50Hz design available
- UL Recognized and CSA Approved

### JVA Voltage Transformers



#### Applications

- Designed for indoor and outdoor service; suitable for operation meters, instrument transformers, relays, and control devices.
- Utility metering

#### Features

- Housed in a resin filled plastic case
- Compression type terminals
- 50Hz design available
- Transparent plastic terminals cover
- Engraved aluminum nameplate
- Designed to meet IEEE C57.13

## BUSHING CURRENT TRANSFORMERS

### Cast Resin Unit



#### Applications

- For use over bushings of power transformers and dead tank circuit breakers
- For metering and relaying applications

#### Features

- Indoor or outdoor service
- 600V class to IEEE C57.13 or IEC 60044-1
- Ratios 50:5 to 25000:5
- Single and multi ratios available
- Optional ground shield available

### Taped Unit



#### Applications

- Designed to customers specifications for metering and relaying applications
- High voltage circuit breakers and power transformers

#### Features

- 600V class to IEEE C57.13 - 1993
- Single and multi ratio designs available
- Leads or terminals available
- Designs for use in oil are available

### Board Mounted Unit



#### Applications

- Designed for mounting and stacking over the bushings of large generators
- For metering and relaying applications

#### Features

- Ratios up to 40,000:5A
- 1 Amp secondaries and IEC design available
- 600V class 50 or 60Hz
- Shield winding available



## MEDIUM VOLTAGE CURRENT & VOLTAGE TRANSFORMERS

### Voltage Transformers



#### Applications

- Indoor voltage transformers for metering and relaying applications in AC power systems

#### Features

- Vacuum cast polyurethane resin
- Designed to meet IEEE C57.13
- 5kV to 34.5kV with BIL rating up to 200kV
- UL Recognized and CSA Approved

### Current Transformers



#### Applications

- Indoor current transformers for metering and relaying applications in AC power systems

#### Features

- Vacuum cast polyurethane resin
- Designed to meet IEEE C57.13
- 5kV to 34.5kV with BIL rating up to 200kV
- UL Recognized and CSA Approved

### 15-35kV Outdoor Voltage Transformers



#### Applications

- Designed for outdoor service; suitable for operating meters, instruments, relays and control devices.

#### Features

- Designed for outdoor service
- Hydrophobic Cycloaliphatic Epoxy insulation
- Engraved aluminum name plate
- Designed to meet C57.13
- 15kV to 36.5kV with BIL ratings up to 200kV

### 15-35kV Outdoor Current Transformers



#### Applications

- Designed for outdoor service; suitable for operating meters, instruments, relays and control devices.

#### Features

- Designed for outdoor service
- Hydrophobic Cycloaliphatic Epoxy insulation
- Ratios from 5:5A to 1200:5A, 50/60Hz
- Dual ratio models available
- Engraved aluminum name plate
- Designed to meet C57.13
- 15kV to 36.5kV with BIL ratings up to 200kV

## CONTROL POWER TRANSFORMERS

### Single Phase Cast Coil Transformers



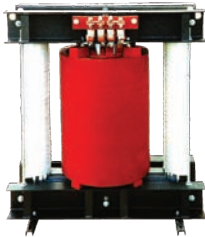
#### Applications

- To provide control power in medium voltage switchgear

#### Features

- Vacuum cast primary coil using epoxy resin
- Single phase rating from 5 kVA to 37.5 kVA
- Voltage rating 5 to 15 kV and BIL rating to 95 kV BIL

### Single Phase Cast Coil Transformers



#### Applications

- To provide control power in medium voltage switchgear
- Generator neutral grounding transformer

#### Features

- Vacuum cast primary and secondary coils using epoxy resin
- Single phase rating from 25 kVA to 75 kVA
- Voltage rating 5 to 34.5kV and BIL rating to 150 kV BIL

### Three Phase Cast Coil Transformers



#### Applications

- To provide control power in medium voltage switchgear

#### Features

- Vacuum cast using epoxy resin
- Three phase rating from 15 kVA to 150 kVA
- Voltage rating 5 to 34.5kV and BIL rating to 150 kV BIL
- Horizontal and vertical mounting available in some models

## CURRENT TRANSDUCERS



#### Applications

- Process control
- Industrial measurement

#### Features

- Models available for 5 to 600 primary AC current
- Output 4-20 mA dc
- UL recognized

## IEC - RATED INSTRUMENT TRANSFORMERS

### Current Transformers (Low Voltage)



#### Applications

- Suitable for measuring applications in AC power systems

#### Features

- Available for indoor applications
- DIN rail mounting
- Designed to meet IEC 60044-1
- 720V rated

### Current Transformers (Medium Voltage)



#### Applications

- Suitable for measuring and protection applications in AC power systems

#### Features

- Available for indoor or outdoor applications
- Vacuum cast in epoxy resin
- Designed to meet IEC 60044-1
- Available from 12 to 36 kV
- Multiple core designs available for measuring and protection in one package

### Voltage Transformers (Medium Voltage)



#### Applications

- Suitable for measuring and protection applications in AC power systems

#### Features

- Available for indoor or outdoor applications
- Vacuum cast in epoxy resin
- Designed to meet IEC 60044-2
- Available from 12 to 36 kV
- Rated Voltage Factor: 1.2/1.9 (Continuous/8 hours)

Visit [www.GEMultilin.com/ITI](http://www.GEMultilin.com/ITI) to:



- View catalog sheets
- Review applications Notes and support documents
- Buy an instrument transformer online
- View the product brochures