

Induction Heating & Melting Capacitors

All-Film and Gemvar™



Product Selection & Application Guide

Product Description

GE manufactures water cooled and air cooled Induction Heating and Melting capacitors with conventional all-film dielectric designs and also with Gemvar metallized polypropylene designs. We are an industry proven quality leader and supplier to major original equipment manufacturers worldwide.

GE is a global supplier of water cooled and air cooled capacitors to the Induction Heating and Melting Industry for more than 50 years with an extensive range of capacitor designs up to 4000 volts, 50 kHz and 4800 amps.

GE's manufacturing facility utilizes state of the art winding machines located in a clean room environment. This carefully controlled winding environment provides the highest reliability possible. That combined with our carefully controlled assembly process and fluid fill process provides for one of the highest quality and longest life products available in the industry.

All capacitors are electrically tested and tested for fluid leaks. This 100% testing in combination with our analytical data evaluation system provides for continuous process/product improvement. These processes provide for some of the lowest leak rates and electrical failure rates in the industry. GE's Quality Management System is certified to ISO 9001-2008.



Table of Contents

Introduction.....	3
Design & Application Considerations.....	4
Selection of AC Water Cooled Capacitor Ratings.....	6
Selection of DC Water Cooled Capacitor Ratings.....	9
Selection of AC Air Cooled Capacitor Ratings.....	10

Introduction

19L and 16L Series Heavy Duty Capacitors for Induction Heating and Melting Applications

Capacitor Construction

Film/Foil and Metallized Dielectric Capacitors

Bulk and Vernier designs, live and isolated case, depending upon the design frequency. Capacitors are designed with and without brackets, and with and without pressure switches which are utilized by equipment manufactures to shutdown equipment in the event that pressure builds up inside the metallized design capacitor can. (See capacitor instruction GEH-2733.)

For water cooled capacitors, proper water flow and water outlet temperature must be maintained as specified in GEH-2733. Failure to provide adequate water flow will cause early failure of capacitors.

The equipment manufacturer must determine what fusing is necessary to protect capacitors in their equipment. Protection must be provided by the equipment manufacturer to protect from re-closure or re-energization of a failed or shorted capacitor.

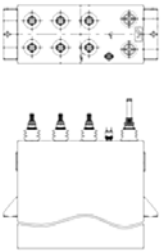
Proper application of these capacitors is the responsibility of the purchaser.

Water Cooled Capacitors

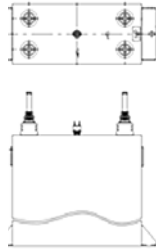
- Designed for use in AC tank circuits or specialty DC filter circuits
- All-film or metallized film dielectric
- Tin-plated, copper studs rated for up to 300 Amps continuous
- Electrical grade phenolic bushings for indoor application
- Long life, 20 year nominal life
- Low loss, less than 0.3 watts per kVAR up to 5 kHz; less than 0.5 watts per kVAR up to 50 kHz
- Special dielectric system designs for high efficiency
- GE dielectric fluids; Dielektrol™ V (DK-VI) for metallized dielectrics; Dielektrol VII (DK-VIIa) for all-film dielectrics
- Tin-plated copper terminals rated for up to 300 Amps rms, continuous
- For designs that employ a pressure switch, they are supplied with a N/C, 12 PSI, non-resetting switch

Water Cooled Design Details

Vernier Design



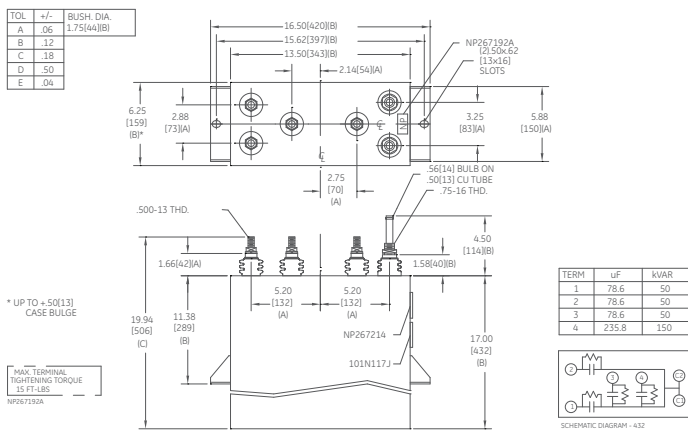
Bulk Design



Design & Application Considerations

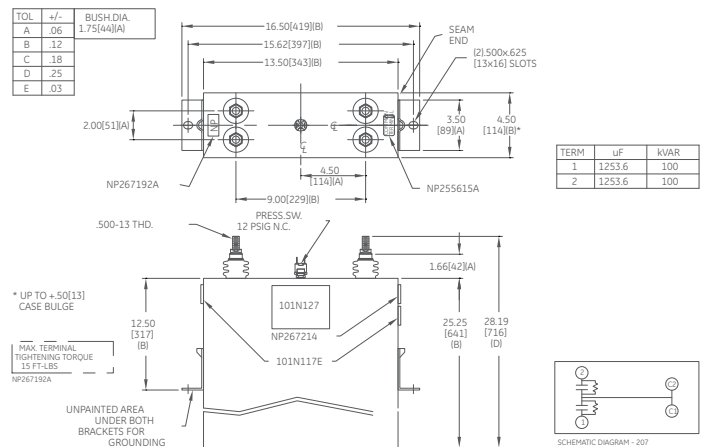
Typical multi section water cooled capacitor drawing

4 section design, with bracket and NO pressure switch
19L0496WH3



Typical multi section air cooled capacitor drawing

2 section design, with bracket and pressure switch
19L0577TH4



Capacitor Catalog Numbering/Suffix Information

16L	Air cooled capacitor
19L	Water cooled capacitor
0496	Base number
W	Fluid designation (see codes to the right)
H	Design iteration
3	Bracket and/or pressure switch (see codes to the right)

Example: 19L0496WH3 (water cooled capacitor, Dielektrol VIIa fluid, includes bracket and no pressure switch)

Fluid Codes

N	Geconol (discontinued)
K	Dielektrol II (discontinued)
R	Dielektrol III (discontinued)
T	Dielektrol VI (active)
U	Dielektrol IV (discontinued)
W	Dielektrol VIIa (active)

Bracket/Pressure Switch

1	No bracket/No pressure switch
2	No bracket/Has pressure switch
3	Has bracket/No pressure switch
4	Has bracket/Has pressure switch

Design & Application Considerations

Water Cooled Designs

Description/Specification/Construction:

- Designed for use in AC tank circuits or specialty DC filter circuits
- All-film or metallized film dielectric
- Tin-plated, copper terminals rated for up to 300 Amps continuous
- Electrical grade phenolic bushings for indoor application
- Long life, 20 year nominal life
- Low loss, less than 0.3 watts per kVAR up to 5 kHz; less than 0.5 watts per kVAR up to 50 kHz
- Special dielectric system designs for high efficiency
- GE dielectric fluids; Dielektról VI for metallized dielectrics, Dielektról VIIa for all-film dielectrics
- Designs that employ a pressure switch are supplied with a N/C, 12 PSI, non-resetting switch. All metallized dielectric designs require a pressure switch
- Case design: textured aluminum using 0.60 in. (15.25mm) to 0.90 in. (22.85mm) aluminum, with 0.125 in. (3.18mm) base and cover
- Brackets when included have .50 in. (12.7mm) and 0.625 in. (15.9mm) mounting slots
- GE requires that equipment manufacturers use the recommendations specified in bulletin GEH-2733 concerning outlet water temperature, water flow rate and water cleanliness in design and operation of their equipment



Air Cooled Designs

Description/Specification/Construction:

- Designed for line frequency application
- All-film or metallized film dielectric
- Tin-plated, copper terminals rated for up to 300 Amps continuous
- Electrical grade phenolic bushings for indoor application
- Long life, 20 year nominal life
- Low loss, less than 0.3 watts per kVAR
- Special dielectric system designs for high efficiency
- GE dielectric fluids; Dielektról V (DK-VI) for metallized dielectrics; Dielektról VII (DK-VIIa) for all-film dielectrics
- Designs that employ a pressure switch are supplied with a N/C, 12 PSI, non-resetting switch. All metallized dielectric designs require a pressure switch
- Standard case material for 50/60 Hz designs is painted stainless steel



Selection of AC Water Cooled Capacitor Ratings

Sorted by Frequency, Volts, Microfarads

Freq.	Ratings			Catalog Number	Other Ratings									Case size			Bracket Location from top of capacitor (In.)
	Volts	kVAR			Total micro-farads	Split (1)	Split (2)	Split (3)	Split (4)	Split (5)	Split (6)	Split (7)	Split (8)	Width In.	Length In.	Height In.	
		Total	Splits														
60	460	75	2	19L0866TH4	940.2	470.1	470.1	0.0	0.0	0.0	0.0	0.0	0.0	3.88	13.50	10.75	5.75
60	460	100	2	19L0879TH4	1253.6	626.8	626.8	0.0	0.0	0.0	0.0	0.0	0.0	4.88	13.50	10.75	5.75
60	600	100	2	19L0876TH4	736.8	368.4	368.4	0.0	0.0	0.0	0.0	0.0	0.0	3.88	13.50	21.75	12.00
60	850	128	4	19L0439WH4	469.9	117.5	117.5	117.5	117.5	0.0	0.0	0.0	0.0	6.25	13.50	15.00	8.25
60	1200	120	1	19L0499WH3	221.0	221.0	0.0	0.0	0.0	0.0	0.0	0.0	0.0	4.62	13.50	17.50	11.00
60	1200	120	3	19L0487WH4	221.0	73.7	73.7	73.7	0.0	0.0	0.0	0.0	0.0	4.12	13.50	17.50	11.00
60	1200	200	2	19L0492WH3	368.4	184.2	184.2	0.0	0.0	0.0	0.0	0.0	0.0	4.50	13.50	22.00	11.00
60	1450	200	2	19L0733WH3	252.4	126.2	126.2	0.0	0.0	0.0	0.0	0.0	0.0	4.75	13.50	22.50	11.00
60	2400	120	2	19L0495WH3	55.3	27.6	27.6	0.0	0.0	0.0	0.0	0.0	0.0	4.12	13.50	17.50	10.62
150	800	440	6	19L0702WH4	729.5	121.6	121.6	121.6	121.6	121.6	121.6	0.0	0.0	6.25	13.50	21.50	9.00
150	1000	807	6	19L0992WH4	856.3	142.7	142.7	142.7	142.7	142.7	142.7	0.0	0.0	6.25	13.50	28.00	9.00
180	550	235	6	19L0428WH4	686.9	233.8	233.8	58.5	116.9	14.6	29.2	0.0	0.0	6.25	13.50	21.00	11.38
180	600	286	6	19L0950WH4	702.4	117.1	117.1	117.1	117.1	117.1	117.1	0.0	0.0	6.25	13.50	14.00	11.38
180	750	300	4	19L0496WH3	471.6	78.6	78.6	78.6	235.8	0.0	0.0	0.0	0.0	6.25	13.50	17.00	9.00
180	750	400	6	19L0707WH4	628.8	78.6	78.6	78.6	78.6	157.2	157.2	0.0	0.0	6.25	13.50	19.00	11.38
180	1200	600	6	19L0483WH4	368.4	30.7	30.7	61.4	61.4	92.1	92.1	0.0	0.0	6.25	13.50	17.50	11.38
200	800	700	6	19L0920WH4	870.4	145.1	145.1	145.1	145.1	145.1	145.1	0.0	0.0	6.25	13.50	25.50	12.00
200	800	1000	6	19L0935WH4	1243.4	207.2	207.2	207.2	207.2	207.2	207.2	0.0	0.0	6.25	13.50	28.00	11.88
200	1800	985	1	19L0752WH4	241.9	241.9	0.0	0.0	0.0	0.0	0.0	0.0	0.0	6.25	13.50	26.00	15.38
200	2400	1500	6	19L0994WH4	207.2	34.5	34.5	34.5	34.5	34.5	34.5	0.0	0.0	6.25	13.50	28.00	9.00
240	750	560	1	19L0444WH3	660.2	660.2	0.0	0.0	0.0	0.0	0.0	0.0	0.0	6.25	13.50	19.50	7.50
250	2000	3214	1	19L1216WH4	511.5	511.5	0.0	0.0	0.0	0.0	0.0	0.0	0.0	8.00	22.00	28.00	11.06
300	600	1388	1	19L1274WH4	2045.4	2045.0	0.0	0.0	0.0	0.0	0.0	0.0	0.0	7.50	22.00	31.00	11.02
300	1000	694	6	19L0408WH4	368.2	30.7	30.7	61.4	61.4	92.0	92.0	0.0	0.0	6.25	13.50	15.00	11.38
300	1000	1000	6	19L0980WH4	530.5	88.4	88.4	88.4	88.4	88.4	88.4	0.0	0.0	6.25	13.50	24.00	9.00
300	1100	1000	6	19L1150WH4	438.4	73.1	73.1	73.1	73.1	73.1	73.1	0.0	0.0	6.25	13.50	19.00	7.50
300	1100	1650	6	19L1002WH4	723.4	120.6	120.6	120.6	120.6	120.6	120.6	0.0	0.0	6.25	13.50	28.00	9.00
300	1500	1815	6	19L1203WH4	428.0	71.3	71.3	71.3	71.3	71.3	71.3	0.0	0.0	6.25	13.50	28.00	9.00
300	1800	1900	6	19L1232WH4	311.1	51.9	51.9	51.9	51.9	51.9	51.9	0.0	0.0	6.25	13.50	28.00	9.00
300	1800	1900	1	19L1233WH4	311.1	311.1	0.0	0.0	0.0	0.0	0.0	0.0	0.0	6.25	13.50	28.00	9.00
300	2200	1815	1	19L1154WH4	198.9	198.9	0.0	0.0	0.0	0.0	0.0	0.0	0.0	6.25	13.50	26.00	9.00
300	3000	5350	1	19L1288WH4	315.4	315.4	0.0	0.0	0.0	0.0	0.0	0.0	0.0	8.00	22.00	31.00	11.06
300	3300	3300	1	19L1219WH4	160.8	160.8	0.0	0.0	0.0	0.0	0.0	0.0	0.0	7.50	22.00	28.00	11.06
400	2400	2500	1	19L0959WH4	172.7	172.7	0.0	0.0	0.0	0.0	0.0	0.0	0.0	6.25	13.50	28.00	9.00
450	3000	5400	1	19L1033WH4	212.2	212.2	0.0	0.0	0.0	0.0	0.0	0.0	0.0	8.00	22.00	28.00	11.06
500	600	1131	8	19L1123WH4	1000.0	125.0	125.0	125.0	125.0	125.0	125.0	125.0	125.0	6.25	13.50	18.50	9.00
500	700	1539	8	19L1064WH4	1000.0	125.0	125.0	125.0	125.0	125.0	125.0	125.0	125.0	6.25	13.50	19.00	9.00
500	700	1680	1	19L1250WH4	1091.3	1091.0	0.0	0.0	0.0	0.0	0.0	0.0	0.0	6.25	13.50	24.50	9.00
500	1000	1500	6	19L0922WH4	477.5	79.6	79.6	79.6	79.6	79.6	79.6	0.0	0.0	6.25	13.50	18.00	9.00
500	1100	1210	5	19L0427WH3	318.3	45.5	68.2	68.2	68.2	68.2	68.2	0.0	0.0	6.25	11.50	14.25	8.00
500	1100	1815	6	19L0904WH4	477.5	79.6	79.6	79.6	79.6	79.6	79.6	0.0	0.0	6.25	13.50	22.00	9.00
500	1250	2000	8	19L0905WH4	407.4	50.9	50.9	50.9	50.9	50.9	50.9	50.9	50.9	6.25	13.50	23.00	9.00
500	1500	1815	6	19L0961WH4	256.8	42.8	42.8	42.8	42.8	42.8	42.8	0.0	0.0	6.25	13.50	19.00	9.00
500	2000	2700	6	19L0948WH4	214.9	35.8	35.8	35.8	35.8	35.8	35.8	0.0	0.0	6.25	13.50	28.00	9.00
500	2400	1815	1	19L0960WH4	100.3	100.3	0.0	0.0	0.0	0.0	0.0	0.0	0.0	6.25	13.50	17.00	9.00
500	2400	1815	4	19L1098WH4	100.3	25.1	25.1	25.1	25.1	25.1	25.1	0.0	0.0	6.25	13.50	20.50	9.00
500	2500	2000	6	19L0954WH4	101.9	17.0	17.0	17.0	17.0	17.0	17.0	0.0	0.0	6.25	13.50	28.00	9.00
500	2500	3000	1	19L0953WH4	152.8	152.8	0.0	0.0	0.0	0.0	0.0	0.0	0.0	6.25	13.50	28.00	9.00
500	3300	3025	1	19L1165WH4	88.4	88.4	0.0	0.0	0.0	0.0	0.0	0.0	0.0	6.50	13.50	28.00	9.00
500	3300	6160	1	19L1251WH4	180.1	180.1	0.0	0.0	0.0	0.0	0.0	0.0	0.0	8.00	22.00	28.00	11.06
540	550	420	6	19L1083WH3	409.2	68.2	68.2	68.2	68.2	68.2	68.2	0.0	0.0	6.25	13.50	11.00	7.00
540	1000	600	6	19L0700WH4	176.8	59.0	59.0	29.5	14.7	7.4	7.4	0.0	0.0	6.25	13.50	11.50	7.50

Selection of AC Water Cooled Capacitor Ratings

Sorted by Frequency, Volts, Microfarads

Freq.	Ratings			Catalog Number	Other Ratings									Case size			Bracket Location from top of capacitor (In.)
	Volts	kVAR			Total micro-farads	Split (1)	Split (2)	Split (3)	Split (4)	Split (5)	Split (6)	Split (7)	Split (8)	Width In.	Length In.	Height In.	
		Total	Splits														
550	2000	3000	1	19L0479WH4	217.0	217.0	0.0	0.0	0.0	0.0	0.0	0.0	0.0	6.25	13.50	26.00	7.50
600	1250	3000	8	19L1039WH4	509.3	63.7	63.7	63.7	63.7	63.7	63.7	63.7	63.7	6.25	13.50	28.00	9.00
600	1500	2700	6	19L0758WH4	318.3	53.1	53.1	53.1	53.1	53.1	53.1	0.0	0.0	6.25	13.50	24.00	7.50
600	4000	6333	1	19L1205WH4	105.0	105.0	0.0	0.0	0.0	0.0	0.0	0.0	0.0	8.00	22.00	28.00	11.06
700	1500	1200	1	19L0414WH4	121.3	121.3	0.0	0.0	0.0	0.0	0.0	0.0	0.0	6.25	13.50	12.00	11.25
700	2500	1800	6	19L0478WH4	261.9	43.7	43.7	43.7	43.7	43.7	43.7	0.0	0.0	6.00	13.50	17.50	9.00
700	3000	2000	1	19L0738WH4	50.5	50.5	0.0	0.0	0.0	0.0	0.0	0.0	0.0	6.25	13.50	14.00	9.00
700	3000	5450	1	19L0779WH4	137.7	137.7	0.0	0.0	0.0	0.0	0.0	0.0	0.0	6.50	16.50	28.00	11.00
900	900	1000	1	19L1131WH1	218.3	218.3	0.0	0.0	0.0	0.0	0.0	0.0	0.0	6.25	13.50	9.00	0.00
960	800	450	5	19L1113WH2	116.6	5.2	7.8	15.5	44.0	44.0	0.0	0.0	0.0	5.12	13.50	13.00	0.00
960	800	450	6	19L0673WH1	117.0	3.0	6.0	12.0	24.0	36.0	36.0	0.0	0.0	4.12	13.50	13.00	0.00
1000	800	62.5	4	19L0578WH4	200.0	10.0	20.0	60.0	110.0	0.0	0.0	0.0	0.0	4.12	13.50	15.25	9.00
1000	800	1900	1	19L0698WH4	472.5	472.5	0.0	0.0	0.0	0.0	0.0	0.0	0.0	6.25	13.50	17.50	9.00
1000	900	733	4	19L1201WH4	144.0	36.0	36.0	36.0	36.0	0.0	0.0	0.0	0.0	5.12	13.50	13.50	9.00
1000	900	2443	1	19L1193WH4	480.0	480.0	0.0	0.0	0.0	0.0	0.0	0.0	0.0	6.25	13.50	14.50	9.00
1000	1100	2200	1	19L0095WH4	289.4	289.4	0.0	0.0	0.0	0.0	0.0	0.0	0.0	6.00	13.50	13.75	7.50
1000	1200	2880	8	19L1043WH4	318.3	39.8	39.8	39.8	39.8	39.8	39.8	39.8	39.8	6.25	13.50	20.50	20.50
1000	1250	750	6	19L0587WH2	76.4	6.4	6.4	12.7	12.7	19.1	19.1	0.0	0.0	4.12	13.50	13.00	0.00
1000	1250	2253	8	19L0680WH4	229.5	8.5	17.0	34.0	34.0	34.0	34.0	34.0	34.0	6.12	13.50	15.25	9.00
1000	1250	3000	8	19L0288WH4	305.6	38.2	38.2	38.2	38.2	38.2	38.2	38.2	38.2	6.25	13.50	20.00	9.00
1000	1250	3000	1	19L0969WH4	305.6	305.6	0.0	0.0	0.0	0.0	0.0	0.0	0.0	6.25	13.50	15.50	9.00
1000	1350	3000	1	19L0246WH4	262.0	262.0	0.0	0.0	0.0	0.0	0.0	0.0	0.0	6.25	13.50	15.00	15.00
1000	2000	2200	6	19L1029WH4	87.5	14.6	14.6	14.6	14.6	14.6	14.6	0.0	0.0	6.25	13.50	20.00	9.00
1000	2200	1815	1	19L0535WH4	59.7	59.7	0.0	0.0	0.0	0.0	0.0	0.0	0.0	6.00	13.50	11.00	9.00
1000	3000	1800	6	19L0072WH4	31.8	5.3	5.3	5.3	5.3	5.3	0.0	0.0	0.0	6.12	13.50	15.25	7.50
1000	3300	1815	1	19L0955WH4	26.5	26.5	0.0	0.0	0.0	0.0	0.0	0.0	0.0	6.25	13.50	11.00	9.00
1000	3300	3300	6	19L1226WH4	48.2	8.0	8.0	8.0	8.0	8.0	8.0	0.0	0.0	6.25	13.50	25.00	9.00
1200	1000	900	8	19L0567WH4	119.4	9.9	9.9	9.9	9.9	19.9	19.9	19.9	19.9	4.62	13.50	13.00	9.00
1200	1250	2000	6	19L0115WH4	169.8	28.3	28.3	28.3	28.3	28.3	28.3	0.0	0.0	5.25	13.50	15.25	9.00
1200	1500	7200	2	19L0359WH4	424.4	212.2	212.2	0.0	0.0	0.0	0.0	0.0	0.0	6.25	22.00	21.50	11.06
1200	1800	1200	6	19L0668WH4	49.1	4.1	4.1	8.2	8.2	12.3	12.3	0.0	0.0	5.12	13.50	13.00	9.00
1200	1800	2900	8	19L0358WH4	118.7	14.8	14.8	14.8	14.8	14.8	14.8	14.8	14.8	6.12	13.50	15.25	9.00
1200	3000	6667	1	19L1115WH4	98.2	98.3	0.0	0.0	0.0	0.0	0.0	0.0	0.0	6.25	13.50	28.00	9.00
1200	3000	6921	1	19L0526WH4	102.0	102.0	0.0	0.0	0.0	0.0	0.0	0.0	0.0	6.25	13.50	28.00	12.12
1500	600	1100	8	19L1122WH4	324.2	40.5	40.5	40.5	40.5	40.5	40.5	40.5	40.5	6.25	13.50	12.00	9.00
1500	2200	5280	1	19L1082WH4	115.7	115.7	0.0	0.0	0.0	0.0	0.0	0.0	0.0	6.25	13.50	24.50	9.00
1500	2500	6000	1	19L1042WH4	101.9	101.9	0.0	0.0	0.0	0.0	0.0	0.0	0.0	6.25	13.50	28.00	9.00
1500	3300	7350	1	19L1152WH4	71.6	71.6	0.0	0.0	0.0	0.0	0.0	0.0	0.0	6.25	13.50	28.00	9.00
2000	1100	2514	8	19L0689WH4	165.3	17.5	17.5	21.7	21.7	21.7	21.7	21.7	21.7	5.12	13.50	13.00	9.00
2000	1200	1900	6	19L1156WH4	105.0	17.5	17.5	17.5	17.5	17.5	17.5	0.0	0.0	4.12	13.50	13.00	9.00
2700	940	800	4	19L0063WH1	53.4	13.3	13.3	13.3	13.3	0.0	0.0	0.0	0.0	4.12	13.50	7.00	0.00
3000	400	300	4	19L0617WH2	99.5	6.6	13.3	26.5	53.1	0.0	0.0	0.0	0.0	4.12	13.50	7.00	0.00
3000	400	450	6	19L0607WH3	149.2	3.3	3.3	13.3	29.8	49.7	49.7	0.0	0.0	4.12	13.50	13.00	13.00
3000	400	600	5	19L0568WH3	198.9	26.5	13.3	53.1	53.1	53.1	0.0	0.0	0.0	4.12	13.50	12.50	9.00
3000	400	900	8	19L0558WH4	298.4	37.3	37.3	37.3	37.3	37.3	37.3	37.3	37.3	6.12	13.50	13.00	9.00
3000	500	545	6	19L0581WH4	115.7	9.8	9.8	24.0	24.0	24.0	24.0	0.0	0.0	4.12	13.50	13.00	9.00
3000	500	800	6	19L0306WH3	169.8	21.2	21.2	31.8	31.8	31.8	31.8	0.0	0.0	5.12	13.50	13.00	9.00
3000	600	1152	8	19L0687WH4	169.8	21.2	21.2	21.2	21.2	21.2	21.2	21.2	21.2	6.52	13.50	7.00	6.88
3000	625	1060	8	19L0256WH4	144.0	4.8	4.8	14.4	14.4	26.4	26.4	26.4	26.4	5.00	13.50	13.50	11.25
3000	750	1375	8	19L0508WH4	129.7	16.2	16.2	16.2	16.2	16.2	16.2	16.2	16.2	6.12	13.50	7.00	6.00
3000	800	900	4	19L0541WH4	74.6	18.7	18.7	18.7	18.7	0.0	0.0	0.0	0.0	4.12	13.50	13.00	9.00
3000	800	1000	4	19L0591WH4	82.9	20.7	20.7	20.7	20.7	0.0	0.0	0.0	0.0	4.12	13.50	13.00	0.00

Selection of AC Water Cooled Capacitor Ratings

Sorted by Frequency, Volts, Microfarads

Freq.	Ratings			Catalog Number	Other Ratings								Case size			Bracket Location from top of capacitor (In.)	
	Volts	KVAR			Total micro-farads	Split (1)	Split (2)	Split (3)	Split (4)	Split (5)	Split (6)	Split (7)	Split (8)	Width In.	Length In.		Height In.
		Total	Splits														
3000	800	1200	8	19L1179WH4	99.5	8.3	8.3	8.3	8.3	16.6	16.6	16.6	16.6	5.12	13.50	13.00	9.00
3000	1000	880	6	19L0164WH3	46.7	1.5	3.0	6.0	12.0	12.0	12.0	0.0	0.0	4.12	13.50	7.00	0.00
3000	1000	1200	8	19L0556WH4	63.7	2.7	2.7	2.7	2.7	10.6	10.6	15.9	15.9	4.12	13.50	13.00	9.00
3000	1000	2500	8	19L0192WH4	132.6	16.6	16.6	16.6	16.6	16.6	16.6	16.6	16.6	4.12	13.50	13.00	9.00
3000	1100	400	4	19L0179WH1	17.5	4.4	2.2	6.6	4.4	0.0	0.0	0.0	0.0	4.12	13.50	7.00	0.00
3000	1100	1650	6	19L0321WH4	72.3	12.4	12.4	12.4	12.4	12.4	12.4	0.0	0.0	4.12	13.50	13.00	9.00
3000	1250	1200	8	19L0562WH4	40.7	1.7	1.7	1.7	1.7	6.8	6.8	10.2	10.2	4.12	13.50	9.00	9.00
3000	1250	2600	8	19L0678WH4	88.3	3.3	6.5	13.1	13.1	13.1	13.1	13.1	13.1	6.12	13.50	13.00	9.00
3000	1250	3000	8	19L0297WH4	101.9	12.7	12.7	12.7	12.7	12.7	12.7	12.7	12.7	5.12	13.50	13.50	9.00
3000	1500	2333	8	19L0684WH4	55.0	4.6	4.6	4.6	4.6	9.2	9.2	9.2	9.2	4.12	13.50	13.00	9.00
3000	2000	3000	8	19L1262WH4	39.8	3.3	3.3	3.3	3.3	6.6	6.6	6.6	6.6	5.12	13.50	13.00	9.00
3000	2200	3960	6	19L0273WH4	43.4	7.2	7.2	7.2	7.2	7.2	7.2	0.0	0.0	5.12	13.50	15.25	9.00
4000	550	418	8	19L0357WH4	55.0	6.9	6.9	6.9	6.9	6.9	6.9	6.9	6.9	4.12	13.50	7.00	7.00
4000	700	1680	8	19L0381WH4	136.4	17.1	17.1	17.1	17.1	17.1	17.1	17.1	17.1	6.12	13.50	9.00	9.00
4000	800	805	6	19L0693WH4	50.1	2.2	4.4	8.7	8.7	13.1	13.1	0.0	0.0	4.12	13.50	7.50	7.50
5000	625	1154	8	19L0205WH4	94.0	2.0	4.0	8.0	16.0	16.0	16.0	16.0	16.0	5.12	13.50	9.00	7.50
6000	3000	1500	6	19L0655WH4	4.4	0.7	0.7	0.7	0.7	0.7	0.7	0.0	0.0	4.12	13.50	13.00	9.00
6000	3000	3900	8	19L0363WH4	11.5	1.4	1.4	1.4	1.4	1.4	1.4	1.4	1.4	4.12	13.50	15.25	9.00
8000	800	1000	8	19L0204WH4	31.1	3.9	3.9	3.9	3.9	3.9	3.9	3.9	3.9	4.12	13.50	7.00	7.00
9600	220	230	6	19L0600WH4	78.8	2.1	4.1	8.1	16.1	24.2	24.2	0.0	0.0	4.12	13.50	7.00	7.00
9600	440	300	6	19L0602WH2	25.7	0.6	1.3	2.7	5.2	7.9	7.9	0.0	0.0	4.12	13.50	7.00	0.00
9600	440	450	6	19L0609WH4	38.5	0.9	1.7	3.4	6.9	12.9	12.9	0.0	0.0	4.12	13.50	7.00	7.00
9600	440	900	8	19L0051WH4	77.1	6.4	6.4	6.4	6.4	12.8	12.8	12.8	12.8	4.12	13.50	9.00	9.00
9600	800	300	5	19L0605WH4	7.8	0.8	0.8	1.6	2.3	2.3	0.0	0.0	0.0	4.12	13.50	7.00	7.00
9600	1000	1200	6	19L0078WH4	19.9	3.3	3.3	3.3	3.3	3.3	3.3	0.0	0.0	4.12	13.50	13.00	7.00
10000	150	35.3	1	19L0143WH3	25.0	25.0	0.0	0.0	0.0	0.0	0.0	0.0	0.0	5.00	6.00	6.62	0.00
10000	600	0	8	19L1124WH4	40.0	5.0	5.0	5.0	5.0	5.0	5.0	5.0	5.0	4.12	13.50	7.00	7.00
10000	600	1150	8	19L0686WH4	50.8	6.4	6.4	6.4	6.4	6.4	6.4	6.4	6.4	4.12	13.50	7.00	5.00
10000	800	1412	8	19L0084WH4	35.1	0.9	0.9	1.8	3.5	7.0	7.0	7.0	7.0	4.12	13.50	13.00	13.00
10000	800	1500	8	19L1160WH4	37.3	4.7	4.7	4.7	4.7	4.7	4.7	4.7	4.7	4.12	13.50	13.00	9.00
10000	800	1920	8	19L1112WH4	47.7	6.0	6.0	6.0	6.0	6.0	6.0	6.0	6.0	5.12	13.50	13.00	9.00
10000	1200	1200	6	19L0569WH4	13.3	1.3	1.3	2.7	2.7	2.7	2.7	0.0	0.0	4.12	13.50	7.00	0.00
10000	1250	2600	8	19L1138WH4	26.5	1.3	2.5	3.8	3.8	3.8	3.8	3.8	3.8	4.12	13.50	13.00	9.00
10000	1250	3000	8	19L0516WH4	30.6	3.8	3.8	3.8	3.8	3.8	3.8	3.8	3.8	5.25	13.50	13.00	9.00
10000	1250	3000	8	19L1076WH4	30.6	3.8	3.8	3.8	3.8	3.8	3.8	3.8	3.8	4.12	13.50	15.25	9.00
10000	3000	3500	3	19L1057WH3	6.2	2.1	2.1	2.1	0.0	0.0	0.0	0.0	0.0	6.12	13.50	15.75	9.00
15000	1250	2500	7	19L1229WH4	17.0	2.4	2.4	2.4	2.4	2.4	2.4	2.4	0.0	5.12	13.50	15.25	9.00
15000	1800	3000	7	19L1240WH4	9.8	1.4	1.4	1.4	1.4	1.4	1.4	1.4	0.0	5.12	13.50	15.25	9.00
20000	3000	3000	7	19L1125WH4	2.7	0.4	0.4	0.4	0.4	0.4	0.4	0.4	0.0	5.12	13.50	15.25	9.00
25000	600	990	7	19L1050WH4	17.5	2.5	2.5	2.5	2.5	2.5	2.5	2.5	0.0	5.12	13.50	15.25	9.00
25000	600	1110	7	19L1121WH4	19.6	2.8	2.8	2.8	2.8	2.8	2.8	2.8	0.0	5.12	13.50	13.00	9.00
25000	800	450	5	19L0013WH2	4.5	0.4	0.4	0.9	1.3	1.3	0.0	0.0	0.0	4.12	13.50	7.00	0.00
25000	800	1140	6	19L0212WH4	11.3	0.6	1.2	2.4	2.4	2.4	2.4	0.0	0.0	5.12	13.50	9.50	9.00
25000	1250	1200	6	19L0175WH4	4.9	0.3	0.3	0.6	1.2	1.2	1.2	0.0	0.0	6.12	13.50	14.25	9.00
30000	2000	3016	7	19L0327WH4	4.0	0.6	0.6	0.6	0.6	0.6	0.6	0.6	0.0	5.12	13.50	15.25	9.00
35000	1800	3000	7	19L1260WH4	4.2	0.6	0.6	0.6	0.6	0.6	0.6	0.6	0.0	5.12	13.50	15.25	9.00
40000	2200	2600	7	19L1248WH4	2.1	0.3	0.3	0.3	0.3	0.3	0.3	0.3	0.0	5.12	13.50	15.25	9.00
50000	750	1180	6	19L1095WH4	6.7	1.1	1.1	1.1	1.1	1.1	1.1	0.0	0.0	5.12	13.50	9.00	9.00
50000	800	955	6	19L0093WH4	4.7	0.3	0.5	1.0	1.0	1.0	1.0	0.0	0.0	6.12	15.50	15.00	9.00
50000	1000	250	6	19L1067WH4	0.8	0.1	0.1	0.1	0.1	0.1	0.1	0.0	0.0	5.12	13.50	7.00	7.00
50000	3000	2000	3	19L1068WH4	0.7	0.2	0.2	0.2	0.0	0.0	0.0	0.0	0.0	6.12	13.50	13.00	9.00

Selection of DC Water Cooled Capacitor Ratings

Sorted by Frequency, Volts, Microfarads

Freq.	Ratings		Catalog Number	Other Ratings									Case size			Bracket Location from top of capacitor (In.)
	Volts	kVAR Splits		Total microfarads	Split (1)	Split (2)	Split (3)	Split (4)	Split (5)	Split (6)	Split (7)	Split (8)	Width In.	Length In.	Height In.	
DC	400	6	19L0828TH4	3300.0	550.0	550.0	550.0	550.0	550.0	550.0	0.0	0.0	4.88	13.50	22.00	7.00
DC	700	2	19L0827TH4	300.0	150.0	150.0	0.0	0.0	0.0	0.0	0.0	0.0	3.00	13.50	6.75	6.75
DC	700	4	19L0497WH3	600.0	150.0	150.0	150.0	150.0	0.0	0.0	0.0	0.0	5.12	13.50	15.75	7.00
DC	700	2	19L0823TH4	1850.0	925.0	925.0	0.0	0.0	0.0	0.0	0.0	0.0	4.88	13.50	19.75	6.84
DC	700	6	19L0832TH4	2300.0	383.3	383.3	383.3	383.3	383.3	383.3	0.0	0.0	4.88	13.50	24.25	9.00
DC	720	6	19L0880TH4	1500.0	250.0	250.0	250.0	250.0	250.0	250.0	0.0	0.0	4.88	13.50	18.75	9.00
DC	800	4	19L0837TH4	1400.0	233.3	233.3	466.7	466.7	0.0	0.0	0.0	0.0	4.88	13.50	13.38	13.38
DC	900	2	19L0847TH4	300.0	150.0	150.0	0.0	0.0	0.0	0.0	0.0	0.0	4.50	13.50	9.00	8.50
DC	900	2	19L0859TH4	400.0	200.0	200.0	0.0	0.0	0.0	0.0	0.0	0.0	3.00	13.50	9.00	0.00
DC	900	4	19L0851TH4	600.0	150.0	150.0	150.0	150.0	0.0	0.0	0.0	0.0	5.25	13.50	11.25	8.88
DC	900	4	19L0840TH4	750.0	200.0	200.0	175.0	175.0	0.0	0.0	0.0	0.0	5.25	13.50	14.38	8.50
DC	900	6	19L0855TH4	850.2	141.7	141.7	141.7	141.7	141.7	141.7	0.0	0.0	4.12	13.50	16.50	9.00
DC	900	6	19L1162WH4	1200.0	200.0	200.0	200.0	200.0	200.0	200.0	0.0	0.0	6.25	13.50	22.00	9.00
DC	900	6	19L0872TH4	1399.8	233.3	233.3	233.3	233.3	233.3	233.3	0.0	0.0	4.88	13.50	11.25	7.00
DC	900	1	19L0868TH4	1500.0	1500.0	0.0	0.0	0.0	0.0	0.0	0.0	0.0	3.75	22.00	17.75	9.88
DC	900	4	19L0843TH4	1850.0	462.5	462.5	462.5	462.5	0.0	0.0	0.0	0.0	5.75	13.50	18.75	7.00
DC	900	8	19L0857TH4	3300.0	412.5	412.5	412.5	412.5	412.5	412.5	412.5	412.5	4.88	16.50	26.50	11.38
DC	1000	4	19L0724WH4	500.0	125.0	125.0	125.0	125.0	0.0	0.0	0.0	0.0	6.25	13.50	11.00	7.00
PK	850	4	19L0028WH1	110.0	10.0	20.0	40.0	40.0	0.0	0.0	0.0	0.0	4.12	13.50	9.50	0.00
PP	1700	4	19L0080WH1	132.0	12.0	24.0	48.0	48.0	0.0	0.0	0.0	0.0	4.12	13.50	11.00	0.00

Selection of AC Air Cooled Capacitor Ratings

Sorted by Frequency, Volts, Microfarads

Freq.	Ratings			Catalog Number	Other Ratings					Case size			Bracket Location from top of capacitor (In.)
	Volts	kVAR			Total micro-farads	Micro-farads (1)	Micro-farads (2)	Micro-farads (3)	Micro-farads (4)	Width In.	Length In.	Height In.	
		Total	Splits										
50	380	25	3	16L0571TJ4	551.1	183.7	183.7	183.7	0.0	2.50	13.50	8.00	6.00
50	380	30	3	16L0578TJ4	661.3	220.4	220.4	220.4	0.0	2.50	13.50	8.00	6.00
50	380	35	3	16L0580TH4	771.5	257.2	257.2	257.2	0.0	2.50	13.50	10.12	6.00
50	3300	125	3	16L0434WH3	36.5	12.2	12.2	12.2	0.0	5.12	13.50	15.88	15.00
50	3300	150	3	16L0263WH3	43.8	14.6	14.6	14.6	0.0	5.12	13.50	13.18	9.25
50	4160	275	1	16L0366WH3	50.6	50.6	0.0	0.0	0.0	5.62	13.50	22.50	12.25
50	5500	90	3	16L0341WH3	9.5	3.2	3.2	3.2	0.0	4.25	22.00	14.75	14.50
50	5500	175	3	16L0342WH3	18.4	6.1	6.1	6.1	0.0	5.62	22.00	14.75	14.50
50	5500	225	3	16L0382WH3	23.7	7.9	7.9	7.9	0.0	5.62	22.00	17.75	17.50
50	6000	200	3	16L0108WH3	17.7	5.9	5.9	5.9	0.0	5.62	22.00	14.75	14.50
50	6600	50	3	16L0114WH3	3.7	1.2	1.2	1.2	0.0	4.25	22.00	14.75	14.50
50	6600	60	3	16L0115WH3	4.4	1.5	1.5	1.5	0.0	4.25	22.00	14.75	14.50
50	6600	80	3	16L0116WH3	5.8	1.9	1.9	1.9	0.0	4.25	22.00	14.75	14.50
50	6600	100	3	16L0111WH3	7.3	2.4	2.4	2.4	0.0	4.25	22.00	14.75	14.50
50	6600	125	3	16L0237WH3	9.1	3.0	3.0	3.0	0.0	4.25	22.00	14.75	14.50
50	6600	200	3	16L0113WH3	14.6	4.9	4.9	4.9	0.0	5.62	22.00	14.75	14.50
50	6600	250	3	16L0265WH3	18.3	6.1	6.1	6.1	0.0	5.62	22.00	17.75	17.50
50	6600	300	3	16L0266WH3	21.9	7.3	7.3	7.3	0.0	5.62	22.00	22.25	22.00
50	6600	350	3	16L0267WH3	25.6	8.5	8.5	8.5	0.0	5.62	22.00	22.75	22.50
50	7200	75	3	16L0176WH3	4.6	1.5	1.5	1.5	0.0	4.25	22.00	14.75	14.50
50	7200	100	3	16L0276WH3	6.1	2.0	2.0	2.0	0.0	4.25	22.00	14.75	14.50
50	7200	150	3	16L0277WH3	9.2	3.1	3.1	3.1	0.0	4.25	22.00	14.75	14.50
50	7200	250	3	16L0279WH3	15.4	5.1	5.1	5.1	0.0	5.62	22.00	17.75	17.50
50	7200	300	3	16L0280WH3	18.4	6.1	6.1	6.1	0.0	5.62	22.00	22.25	22.00
60	240	10	3	16L1521TH4	460.5	153.5	153.5	153.5	0.0	3.50	13.50	4.00	Flush w/ top
60	240	20	3	16L1523TH4	921.0	307.0	307.0	307.0	0.0	3.50	13.50	5.75	Flush w/ top
60	240	25	3	16L0547TH4	1151.3	383.8	383.8	383.8	0.0	4.50	13.50	10.00	6.00
60	240	30	3	16L0526TH4	1381.6	460.5	460.5	460.5	0.0	4.50	13.50	12.00	6.00
60	240	50	3	16L1525TH4	2302.6	767.5	767.5	767.5	0.0	3.50	13.50	12.25	Flush w/ top
60	277	81.9	1	16L0586TH4	2831.3	2831.3	0.0	0.0	0.0	3.50	13.50	14.50	7.00
60	460	50	2	16L0022WH3	626.8	313.4	313.4	0.0	0.0	4.12	13.50	17.50	10.50
60	460	100	4	16L0583TH4	1253.6	313.4	313.4	313.4	313.4	4.62	13.50	14.50	5.00
60	460	100	1	16L0575TH4	1253.6	1254.0	0.0	0.0	0.0	3.50	13.50	18.75	12.50
60	460	150	2	16L0576TH4	1880.4	940.2	940.2	0.0	0.0	4.50	13.50	21.00	12.50
60	460	200	2	16L0577TH4	2507.2	1253.0	1253.0	0.0	0.0	4.50	13.50	25.25	12.50
60	480	20	3	16L0536TH4	230.3	76.8	76.8	76.8	0.0	3.50	13.50	6.75	6.00
60	480	25	3	16L0246WH3	287.8	95.9	95.9	95.9	0.0	5.12	13.50	8.00	6.88
60	480	30	3	16L0247WH3	345.4	115.1	115.1	115.1	0.0	5.12	13.50	9.00	6.88
60	480	40	3	16L0548TH4	460.5	153.5	153.5	153.5	0.0	2.50	13.50	12.25	6.00
60	480	50	3	16L1545TH4	575.7	191.9	191.9	191.9	0.0	3.50	13.50	10.12	Flush w/ top
60	480	60	3	16L0250WH3	690.8	230.3	230.3	230.3	0.0	4.88	13.50	16.50	6.88
60	480	75	3	16L0251WH3	862.5	287.5	287.5	287.5	0.0	4.88	13.50	20.00	6.88
60	480	80	3	16L0252WH3	921.0	307.0	307.0	307.0	0.0	5.12	13.50	20.00	6.88
60	480	90	3	16L0298WH3	1036.2	345.4	345.4	345.4	0.0	5.12	13.50	22.50	6.88
60	480	100	3	16L0130WH3	1151.3	383.8	383.8	383.8	0.0	5.12	13.50	24.75	5.50
60	480	100	6	16L0585TH4	1151.3	191.9	191.9	191.9	191.9	3.50	13.50	16.75	6.00
60	575	50	2	16L0407WH3	401.1	200.6	200.6	0.0	0.0	4.00	13.50	12.50	10.50
60	575	75	2	16L0408WH3	601.8	300.9	300.9	0.0	0.0	5.88	13.50	22.50	10.50
60	575	100	2	16L0501TH4	802.3	401.1	401.1	0.0	0.0	3.50	13.50	19.00	9.00
60	600	50	3	16L0533TH4	368.4	122.8	122.8	122.8	0.0	4.62	13.50	10.12	6.00
60	600	75	3	16L0258WH3	552.6	184.2	184.2	184.2	0.0	5.12	13.50	13.00	6.88
60	600	100	3	16L0125WH3	736.8	245.6	245.6	245.6	0.0	5.12	13.50	16.50	7.50
60	600	150	2	16L0031WH4	1105.2	552.6	552.6	0.0	0.0	6.00	13.50	24.00	10.18

Selection of AC Air Cooled Capacitor Ratings

Sorted by Frequency, Volts, Microfarads

Freq.	Ratings			Catalog Number	Other Ratings					Case size			Bracket Location from top of capacitor (In.)
	Volts	kVAR			Total micro-farads	Micro-farads (1)	Micro-farads (2)	Micro-farads (3)	Micro-farads (4)	Width In.	Length In.	Height In.	
		Total	Splits										
60	600	200	2	16L0546TH4	1473.7	736.8	736.8	0.0	0.0	4.50	13.50	23.25	12.50
60	660	200	3	16L0089WH4	1217.9	406.0	406.0	406.0	0.0	5.25	13.50	25.25	10.15
60	750	75	3	16L0332WH3	353.7	117.9	117.9	117.9	0.0	5.12	13.50	13.00	6.88
60	750	100	2	16L0409WH3	471.6	235.8	235.8	0.0	0.0	4.38	13.50	24.00	12.50
60	750	200	2	16L0518TH4	943.1	628.8	314.4	0.0	0.0	4.88	13.50	21.00	11.00
60	800	200	2	16L0059WH4	828.9	414.5	414.5	0.0	0.0	6.00	13.50	24.00	10.18
60	1200	25	3	16L0172WH3	46.1	15.4	15.4	15.4	0.0	4.00	13.50	7.50	7.50
60	1200	50	3	16L0173WH3	92.1	30.7	30.7	30.7	0.0	4.00	13.50	9.25	9.25
60	1200	75	3	16L0177WH3	138.2	46.1	46.1	46.1	0.0	4.38	13.50	10.00	9.25
60	1200	100	3	16L0174WH3	184.2	61.4	61.4	61.4	0.0	4.38	13.50	13.18	9.25
60	1200	125	3	16L0178WH3	230.3	76.8	76.8	76.8	0.0	5.12	13.50	13.18	9.25
60	1200	150	1	16L0230WH3	276.3	276.3	0.0	0.0	0.0	4.12	13.50	22.50	14.06
60	1200	200	2	16L0323WH4	368.4	276.3	92.1	0.0	0.0	4.00	13.50	25.50	12.50
60	1200	250	3	16L0175WH3	460.5	153.5	153.5	153.5	0.0	5.12	13.50	24.00	15.00
60	1200	300	3	16L0202WH3	552.6	184.2	184.2	184.2	0.0	5.50	13.50	26.25	15.00
60	1200	400	2	16L0033WH4	736.8	368.4	368.4	0.0	0.0	6.88	13.50	27.75	12.00
60	1250	150	2	16L0385WH3	254.6	127.3	127.3	0.0	0.0	4.12	13.50	19.25	12.50
60	1250	200	2	16L0393WH3	339.5	169.8	169.8	0.0	0.0	4.38	13.50	25.50	12.50
60	1500	100	1	16L0209WH3	117.9	117.9	0.0	0.0	0.0	4.38	13.50	13.75	13.75
60	1500	150	1	16L0215WH3	176.8	176.8	0.0	0.0	0.0	4.12	17.50	13.50	12.50
60	1500	200	1	16L0210WH3	235.8	235.8	0.0	0.0	0.0	4.12	25.50	13.50	12.50
60	1500	240	2	16L0010WH3	282.9	141.5	141.5	0.0	0.0	4.88	13.50	25.50	12.50
60	1600	330	2	16L0051WH3	341.8	170.9	170.9	0.0	0.0	6.00	13.50	25.50	12.00
60	1800	240	2	16L0419WH3	196.5	131.0	65.5	0.0	0.0	4.38	13.50	25.50	14.77
60	2400	150	2	16L0383WH3	69.1	34.5	34.5	0.0	0.0	4.38	17.50	13.50	12.18
60	2400	200	1	16L0234WH3	92.1	92.1	0.0	0.0	0.0	4.88	13.50	13.18	9.25
60	2400	400	4	16L0034WH3	184.2	23.0	23.0	92.1	46.1	6.62	13.50	26.25	12.50
60	2400	600	3	16L0091WH3	276.3	92.1	92.1	92.1	0.0	4.12	13.50	22.50	9.00
60	2600	120	1	16L0232WH3	47.1	47.1	0.0	0.0	0.0	4.12	13.50	14.00	12.50
60	2600	240	1	16L0233WH3	94.2	94.2	0.0	0.0	0.0	4.62	13.50	22.00	12.50
60	2770	150	1	16L0179WH4	51.9	51.9	0.0	0.0	0.0	4.38	13.50	17.25	7.50
60	2770	200	3	16L0231WH3	69.1	23.1	23.1	23.1	0.0	5.12	13.50	18.88	15.00
60	2770	200	3	16L0092WH3	207.4	69.1	69.1	69.1	0.0	4.00	13.50	22.50	9.00
60	2800	150	1	16L0387WH3	50.8	50.8	0.0	0.0	0.0	4.12	13.50	18.50	11.50
60	2800	200	1	16L0399WH3	67.7	67.7	0.0	0.0	0.0	4.12	13.50	22.00	14.86
60	2800	230	1	16L0006WH3	77.8	77.8	0.0	0.0	0.0	4.88	13.50	22.00	14.86
60	2800	300	2	16L0020WH3	101.5	67.7	33.8	0.0	0.0	6.12	13.50	22.00	14.86
60	2800	400	2	16L0027WH3	135.3	67.7	67.7	0.0	0.0	6.12	13.50	22.00	14.86
60	3300	94.5	1	16L0169WH4	23.0	23.0	0.0	0.0	0.0	4.38	13.50	17.50	7.50
60	3300	125.9	1	16L0168WH4	30.7	30.7	0.0	0.0	0.0	5.62	13.50	17.50	7.50
60	3300	200	3	16L0375WH3	48.7	16.2	16.2	16.2	0.0	5.12	13.50	15.88	15.00
60	3300	300	3	16L0345WH3	73.1	24.4	24.4	24.4	0.0	5.12	13.50	24.00	15.00
60	3300	400	2	16L0370WH3	97.4	48.7	48.7	0.0	0.0	6.38	13.50	22.50	12.25
60	5500	350	3	16L0229WH3	30.7	10.2	10.2	10.2	0.0	6.25	22.00	26.50	26.25
60	6000	100	3	16L0324WH3	7.4	2.5	2.5	2.5	0.0	4.25	22.00	14.75	14.50

Digital Energy

Capacitor & Power Quality Products
(518) 746-5750

381 Broadway, Ft Edward, NY 12828



GE, the GE monogram, Gemvar and Dielektral are trademarks of General Electric Company.

GE reserves the right to make changes to specifications of products described at any time without notice and without obligation to notify any person of such changes.

Copyright 2014, General Electric Company.