

# GE TRANQUELL™ Surge Arresters

## Product Selection & Application Guide

### Heavy Duty Distribution Class-Polymer and Riser Pole Polymer Arresters IEEE®/ANSI® C62.11

#### GE Surge Protection

The performance and reliability of today's electric power systems can be enhanced with the unique characteristics of GE TRANQUELL arrester products. Since introducing the world's first metal oxide arrester in 1976, offering new concepts in surge arrester design and application, GE has developed and applied metal oxide technology for a variety of traditional and special applications. GE offers one of the most complete lines of surge arrester products in the world today; from distribution class to EHV arresters up to 612kV rating as well as high energy varistors for series capacitor applications.

Product and power systems engineers work closely to optimize product performance on the system. GE is one of the world's leading supplier of metal oxide arresters and specialty varistors.

GE TRANQUELL Arresters are designed and manufactured in accordance with the latest revision of ANSI/IEEE C62.11. TRANQUELL polymer and porcelain arresters are designed to meet the most demanding service conditions.



#### Product Description

The GE TRANQUELL distribution and riser pole polymer line of surge arrester products provide excellent protective characteristics, temporary over voltage capability, and switching surge energy withstand to power systems of voltages less than 46kV rms.

GE polymer arresters are ideally suited for application in both indoor and outdoor situations. They are designed and manufactured in accordance with the latest revision of ANSI/IEEE C62.11 and IEC® 99-4.



# Table of Contents

---

## Heavy Duty Distribution Arresters

### — 9L20 Series

Ratings & Characteristics.....	3
Drawings.....	5
TOV Curves.....	7

## Riser Pole Arresters

### — 9L27 Series

Ratings & Characteristics.....	8
Drawings.....	9
TOV Curves.....	10

---

# Heavy Duty Distribution Arresters – 9L20 Series

Nominal System Suggested Arrester Ratings

Line-to-Line Voltage	3 WIRE DELTA OR WYE		
	Rated Voltage	Rated Voltage	Rated Voltage
	4 Wire Multi-Grounded Neutral System	Low Impedance Ground	High Impedance or Ungrounded
4160	3	6	6
4800	6	6	6
6640	6	6	9
7200	6	9	9
7620	6	9	9
8320	6	9	10
9960	9	9	12
11000	9	10	12
11500	9	10	15
12000	9	12	15
12470	9	12	15
13200	10	12	15
13800	10	12	18
14400	12	15	18
17250	15	15	21
19750	15	18	21
20780	15	18	24
22860	18	21	27
24940	18	24	30
26400	21	24	30
27700	21	27	30
34500	27	30	36
36200	27	36	-

## Heavy Duty Distribution Arresters — 9L20 Series — Characteristics

### Heavy Duty Distribution Arresters 9L20 – Electrical/Protective Characteristics

Rated Voltage (kV) rms	MCOV (kV) rms	0.5 $\mu$ sec 10 kA max Ir-kV Crest	Switching Surge max Ir-kV Crest	8/20 MAXIMUM DISCHARGE VOLTAGE (kV) CREST					
				1.5 kA	3.0 kA	5 kA	10 kA	20 kA	40 kA
3	2.6	10.6	7.6	8.0	8.5	9.0	9.9	11.1	13.2
6	5.1	21.3	15.3	15.9	17.0	18.0	19.8	22.3	26.5
9	7.7	31.2	22.4	23.3	24.9	26.4	29.0	32.6	38.8
10	8.4	34.0	24.4	25.4	27.1	28.8	31.6	35.6	42.3
12	10.2	40.4	29.0	30.3	32.3	34.2	37.6	42.3	50.3
15	12.7	51.4	36.9	38.5	41.1	43.5	47.8	53.8	64.0
18	15.3	60.6	43.5	45.4	48.4	51.3	56.4	63.5	75.5
21	17.0	68.3	49.0	51.1	54.5	57.8	63.5	71.4	85.0
24	19.5	81.9	58.8	61.3	65.5	69.3	76.2	85.7	102.0
27	22.0	91.9	65.9	68.8	73.4	77.8	85.5	96.2	114.4
30	24.4	101.1	72.5	75.7	80.7	85.5	94.0	105.8	125.8
36	29.0	121.4	87.0	90.9	97.0	102.7	112.9	127.0	151.1

Table 1

### 3-36kV Heavy Duty Polymer Distribution Arresters 9L20 Series

Catalog Number	Insulating Bracket	Disconnect	Bird Cap	X-Arm Bracket	Transformer Bracket	18" Line Lead	Ground Strap	Drawing Details	Notes
9L20AXX0**AHS	X	X		X				1	"Z" Dimension is 6.8 inches for 3kV thru 9kV, 7.56 inches for 10kV thru 18kV and 8.56 inches for 21kV thru 36kV rated.  For Drawings 5 & 6, the "W" Dimension is 11.0 inches for 3kV thru 10kV rated and 7.0 inches for 12kV thru 36kV rated.
9L20AXX4**AHS	X	X	X	X				2	
9L20AXA4**AHS	X	X	X	X		X		2	
9L20AXA0**AHS	X	X		X		X		1	
9L20AXX0**XHS	X	X						3	
9L20AXX4**XHS	X	X	X					4	
9L20AXA4**XHS	X	X	X			X		4	
9L20AXA0**XHS	X	X				X		3	
9L20AXX0**BHS	X	X			X			5	
9L20AXX4**BHS	X	X	X		X			6	
9L20AHA4**BHS	X	X	X		X	X	X	6	
9L20AHX4**BHS	X	X	X		X		X	6	
9L20AHX0**BHS	X	X			X		X	5	
9L20AFA4**BHS	X	X	X		X	X	X	6	
9L20AFX4**BHS	X	X	X		X		X	6	
9L20AFX0**BHS	X	X			X		X	5	
9L20BXX0**XHS	X							7	
9L20FXX0**XHS								8	

Heavy Duty Distribution Arresters 9L20 –  
Physical Characteristics

Voltage	MCOV	Creep		Strike		Min 1.2 X 50µs Withstand	Min Power Frequency	"X" Overall Height		MOUNTING CLEARANCE				WEIGHT			
										Center Line to Center Line		Center Line to Ground		Unit with Insulating Bracket		Unit with Xformer Bracket	
kV RMS	kV RMS	IN	MM	IN	MM	(kV CREST)	(kV RMS ) WET (10 SEC)	IN	MM	IN	MM	IN	MM	LBS	KGS	LBS	KGS
3	2.55	8.5	216	3.8	97	17.6	3.5	3.0	76	5	127	3	76	2.9	1.3	5.4	2.5
6	5.1	11.3	287	4.6	117	35.1	6.9	3.8	96	5.4	137	3.4	86	3.3	1.5	5.8	2.6
9	7.65	14.4	366	5.7	145	47.9	10.4	4.9	124	6	152	4	102	3.8	1.7	6.3	2.9
10	8.4	14.4	366	5.7	145	51.1	11.4	4.9	124	6.2	157	4.2	107	3.8	1.7	6.3	2.9
12	10.2	17	432	6.6	168	61.5	13.9	5.4	137	7.5	191	5.5	140	4.3	1.9	6.8	3.1
15	12.7	25.2	640	8.8	223	76.7	17.3	7.8	198	8.5	216	6.5	165	5.6	2.5	8.1	3.7
18	15.3	25.2	640	8.8	223	91.9	20.8	7.8	198	9.5	241	7.5	191	5.6	2.5	8.1	3.7
21	17	28.1	714	9.7	246	102.2	23.1	8.6	218	10	254	8	203	6.2	2.8	8.7	4.0
24	19.5	36.5	927	12.4	315	123.0	26.5	11.5	292	12	305	10	254	8.3	3.8	10.8	4.9
27	22	39.6	1006	13.4	340	138.2	29.9	12.6	320	13	330	11	279	8.7	4.0	11.3	5.1
30	24.4	42.2	1072	14.0	356	153.4	33.2	13.1	332	14	356	12	305	9.2	4.2	11.7	5.3
36	29	50.4	1280	16.2	411	183.7	39.4	15.5	393	16.5	419	14.5	368	10.3	4.7	12.8	5.8

## Heavy Duty Distribution Arresters — 9L20 Series — Drawings

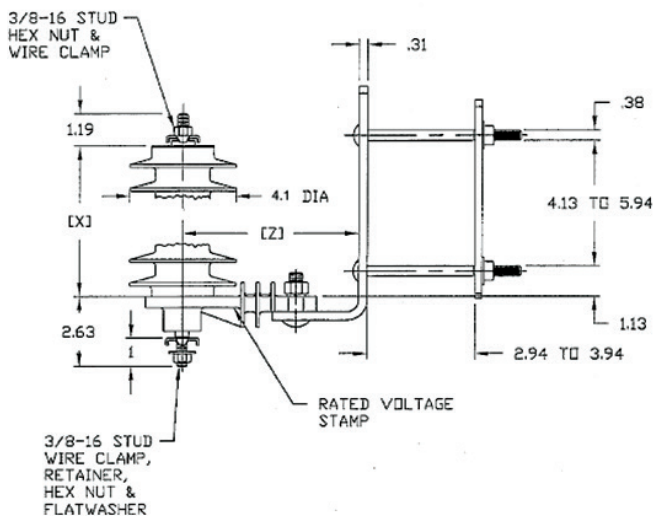
The drawings below are general drawings to provide all options and dimensional information.

See: 3-36kV Heavy Duty Polymer Distribution Arresters 9L20 Series for specific options (page two, Table 1).

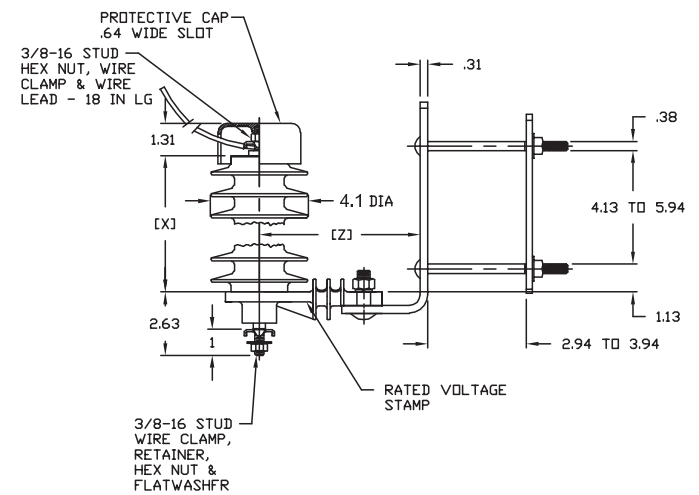
Notes from 3-36kV Heavy Duty Polymer Distribution Arresters 9L20 Series:

- |  |                                      |
|--|--------------------------------------|
| 1) Contains 18" line lead                  | 3) Contains ground strap             |
| 2) Contains 18" line lead and ground strap | 4) Product ratings from 12kV to 36kV |
|  | 5) Product ratings from 3kV to 10kV  |

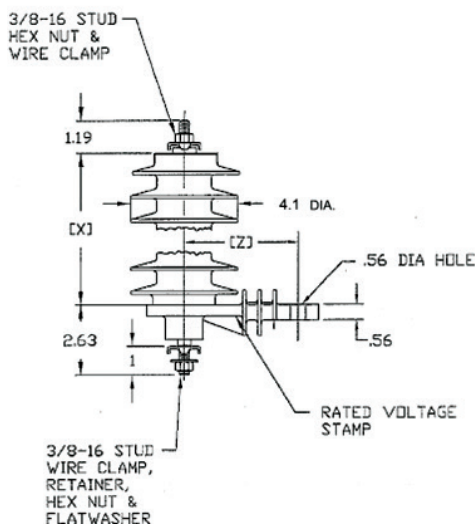
Drawing 1



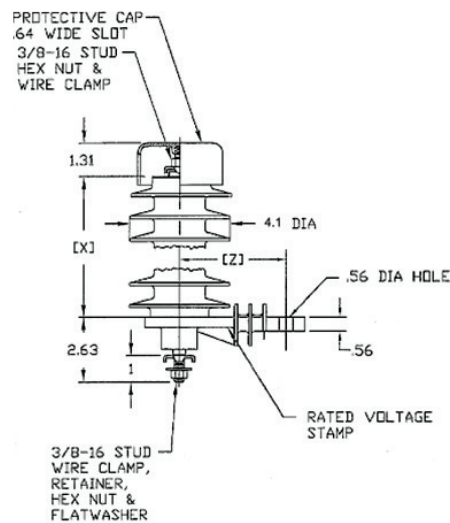
Drawing 2



Drawing 3



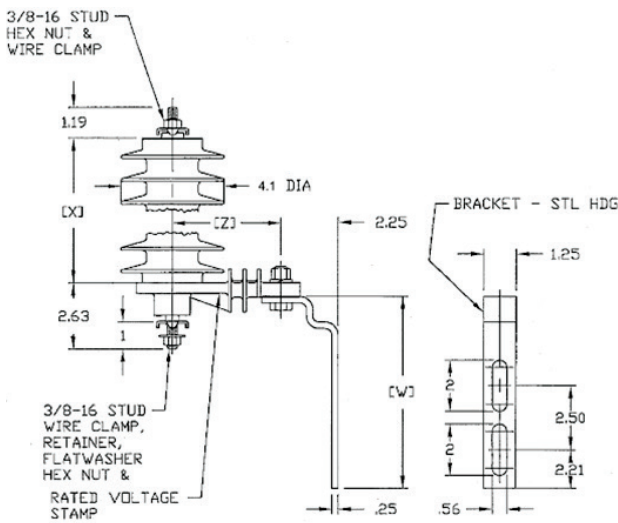
Drawing 4



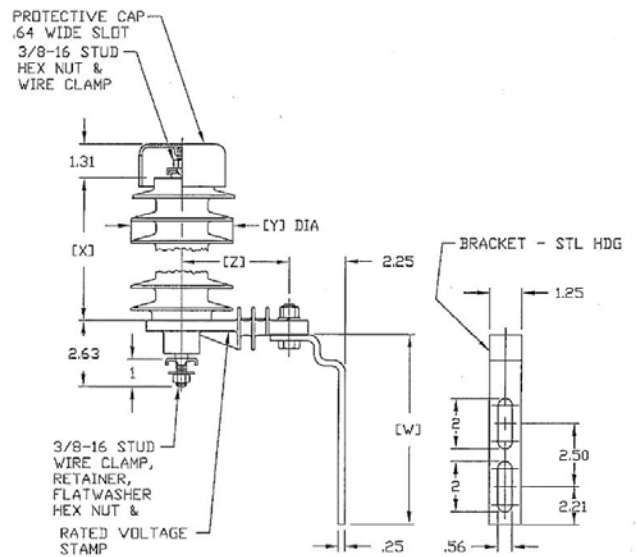
NOTE: For all Drawings, "Z" Dimension is 6.8 inches for 3kV thru 9kV. 7.56 inches for 10kV thru 18kV and 8.56 inches for 21kV thru 36kV rated.

NOTE: For Drawings 5 & 6, the "W" Dimension is 11.0 inches for 3kV thru 10kV rated and 7.0 inches for 12kV thru 36kV rated.

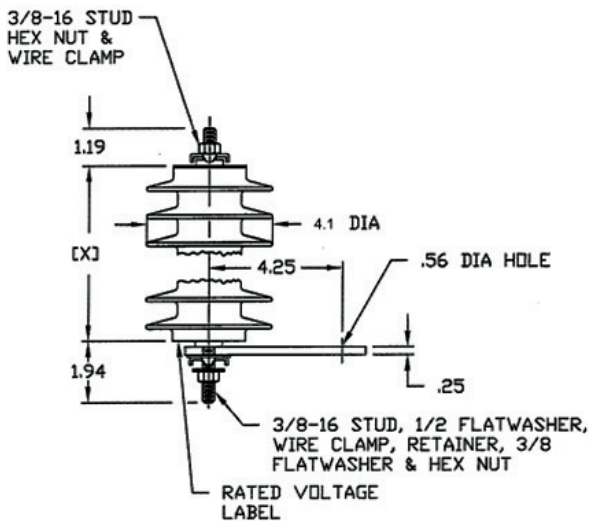
Drawing 5



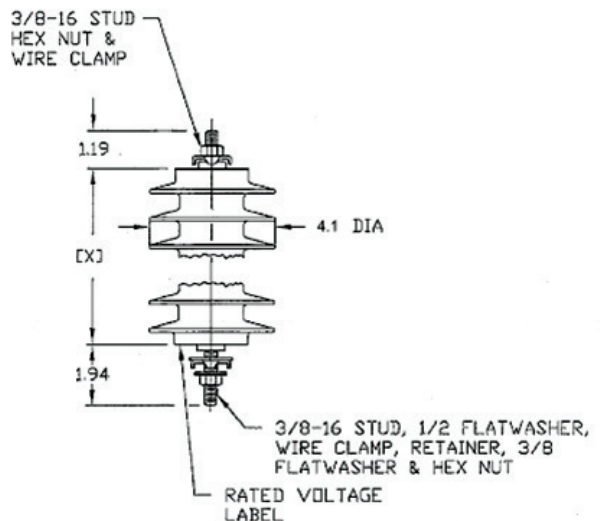
Drawing 6



Drawing 7

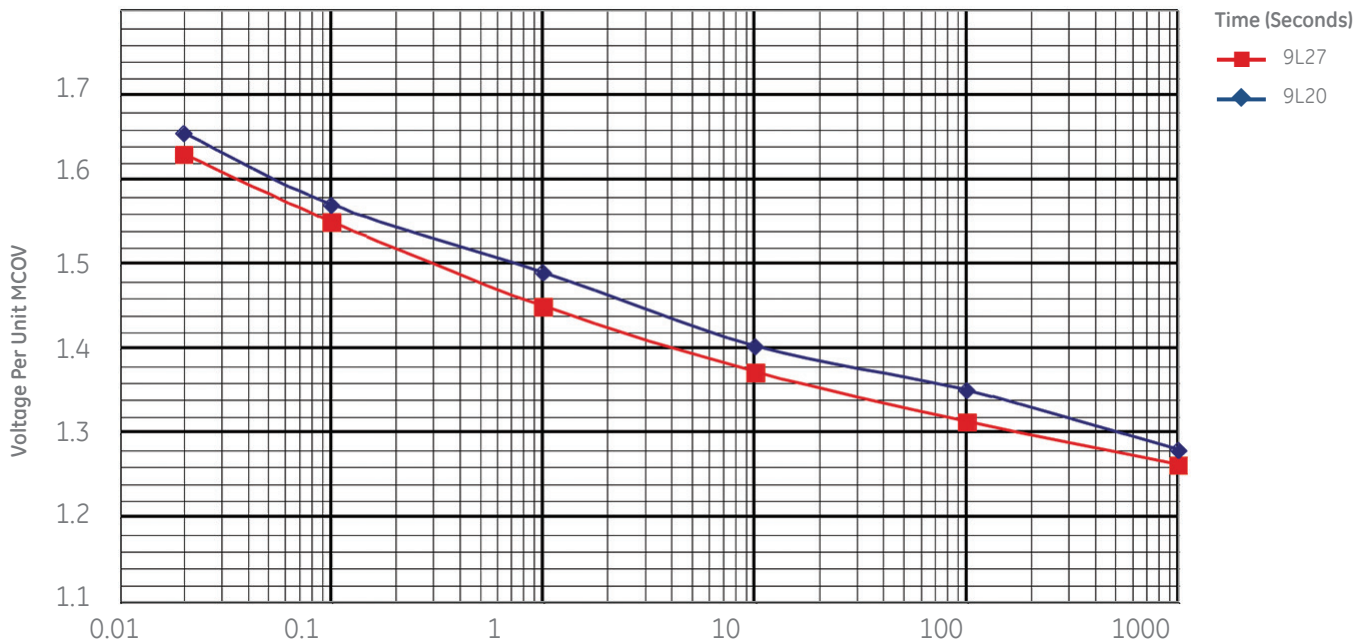


Drawing 8

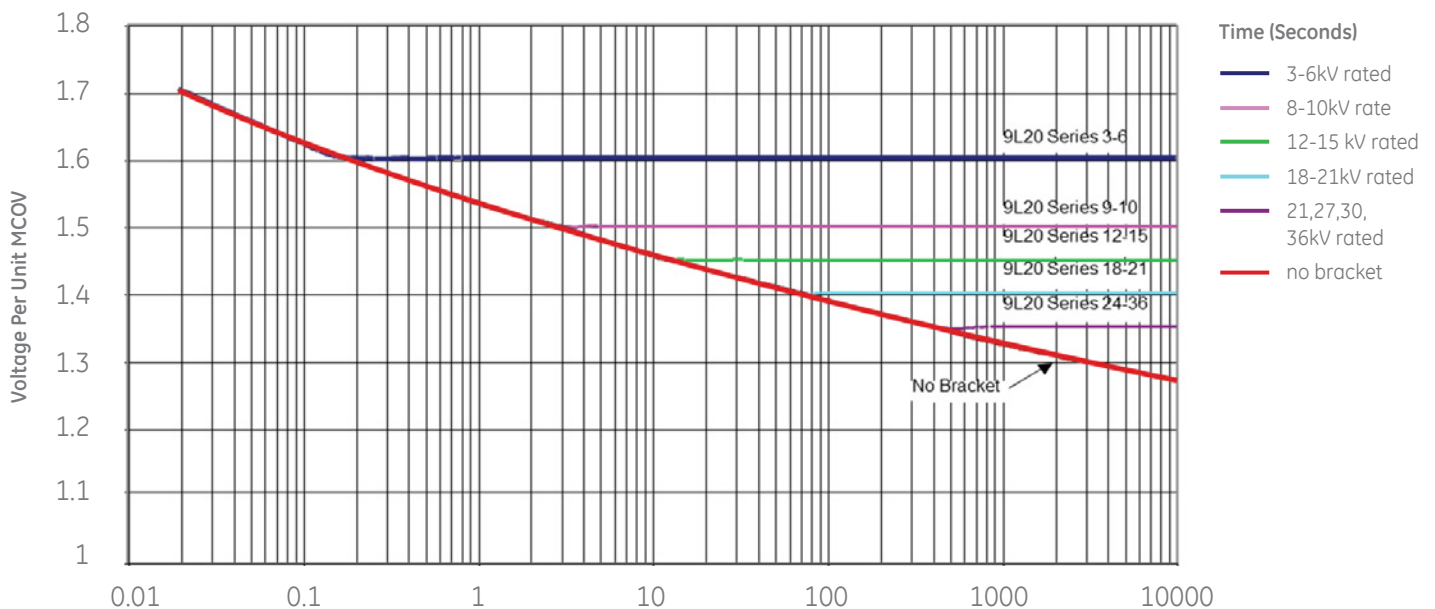


## Heavy Duty Distribution Arresters — 9L20 Series — TOV Curves

### No Prior Duty TOV Curves, Distribution Arresters 9L20FX Series Without Bracket



### Temporary Power Frequency Voltage vs. Time for 9L20 Series Polymer Distribution Arresters





# Riser Pole Arresters — 9L27 Series

## Product Series

Product Number	Insulating Bracket	Disconnect	Bird Cap	X-Arm Bracket
9L27HXX4**XHS	x	x	x	
9L27HXX4**AHS	x	x	x	x

## Electrical/ Protective Characteristics

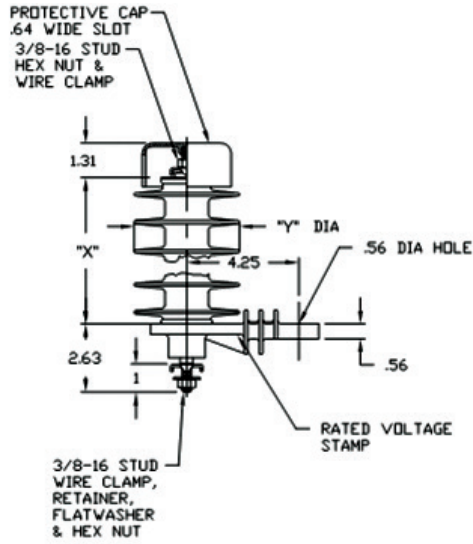
Rating Voltage (kV) rms	MCOV (kV) rms	0.5 $\mu$ sec 10 kA max Ir-kV Crest	500 Switching Surge max Ir-kV Crest	8/20 MAXIMUM DISCHARGE VOLTAGE (kV) CREST					
				1.5 kA	3kA	5kA	10kA	20kA	40kA
3	2.55	9.9	7.6	7.2	7.8	8.2	9.1	10.4	12.3
6	5.1	20	13.3	14.6	15.7	16.6	18.3	21	24.8
9	7.65	26.8	17.8	19.5	21	22.2	24.5	28.1	33.2
10	8.4	29.5	19.6	21.5	23.1	24.4	27	31	36.6
12	10.2	35.5	23.6	25.9	27.9	29.4	32.5	37.3	44
15	12.7	44.2	29.4	32.2	34.7	36.7	40.5	46.5	54.8
18	15.3	53.4	35.5	38.9	41.9	44.3	48.9	56.1	66.2
21	17	60.7	40.3	44.3	47.6	50.3	55.6	63.8	75.3
24	19.5	70.9	47.1	51.7	55.6	58.7	64.9	74.4	87.9
27	22	78.6	52.2	57.3	61.7	65.2	72	82.6	97.5
30	24.4	88.5	58.7	64.5	69.4	73.3	81	92.9	110
36	29	105	69.7	76.5	82.4	87	96.1	110	130

## Insulation and Physical Characteristics

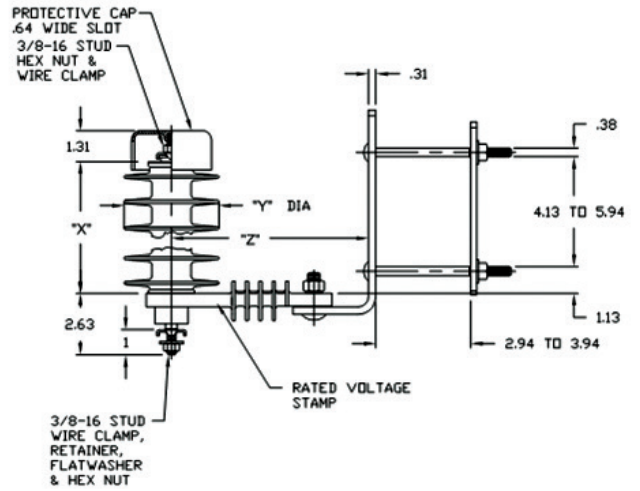
RATING				DRAWING DIMENSIONS				MOUNTING CLEARANCE				WEIGHT									
Voltage	MCOV	Creep		Strike		Min 1.2 X 50 $\mu$ s Withstand (kV CREST)	Min Power Frequency (kV RMS) WET (10 SEC)	"X" height		"Y" Dia		"Z" Dim		Center Line to Center Line		Center Line to Ground		Unit with Insulating Bracket		Unit with Xformer Bracket	
		kV RMS	kV RMS	IN	MM			IN	MM	IN	MM	IN	MM	IN	MM	IN	MM	IN	MM	LBS	KGS
3	2.55	8	203	3.8	97	45.0	13.0	7	178	4	102	6.81	173	5	127	3	76	3.3	1.5	5.8	2.6
6	5.1	15.4	391	4.6	117	60.0	20.0	9.4	239	4	102	6.81	173	5.3	135	3.3	84	4.1	1.9	6.6	3.0
9	7.65	15.4	391	5.7	145	75.0	24.0	9.4	239	4	102	6.81	173	5.8	147	3.8	97	4.1	1.9	6.6	3.0
10	8.4	15.4	391	5.7	145	75.0	24.0	9.4	239	4	102	6.81	173	6	152	4	102	4.1	1.9	6.6	3.0
12	10.2	15.4	391	6.6	168	85.0	27.0	9.4	239	4	102	7.56	192	7.3	185	5.3	135	4.3	2.0	6.8	3.1
15	12.7	26	660	8.8	223	95.0	30.0	12.4	315	4.5	114	7.56	192	8.3	211	6.3	160	5.5	2.5	8.0	3.6
18	15.3	26	660	8.8	223	125.0	36.0	12.4	315	4.5	114	7.56	192	9.2	234	7.2	183	6.1	2.8	8.6	3.9
21	17	26	660	9.7	246	125.0	36.0	12.4	315	4.5	114	7.56	192	9.7	246	7.7	196	6.1	2.8	8.6	3.9
24	19.5	30.8	782	12.4	315	125.0	60.0	14.7	373	4.5	114	8.56	217	11.6	295	9.6	244	7.4	3.4	9.9	4.5
27	22	52	1321	13.4	340	150.0	60.0	21.1	536	4.5	114	8.56	217	12.5	318	10.5	267	9.6	4.4	12.1	5.5
30	24.4	52	1321	14.0	356	150.0	60.0	21.1	536	4.5	114	8.56	217	13.5	343	11.5	292	9.6	4.4	12.1	5.5
36	29	52	1321	16.2	411	200.0*	80.0*	21.1	536	4.5	114	8.56	217	16	406	14	356	10.8	4.9	13.3	6.0

## Riser Pole Arresters — 9L27 Series - Drawings

### Drawings



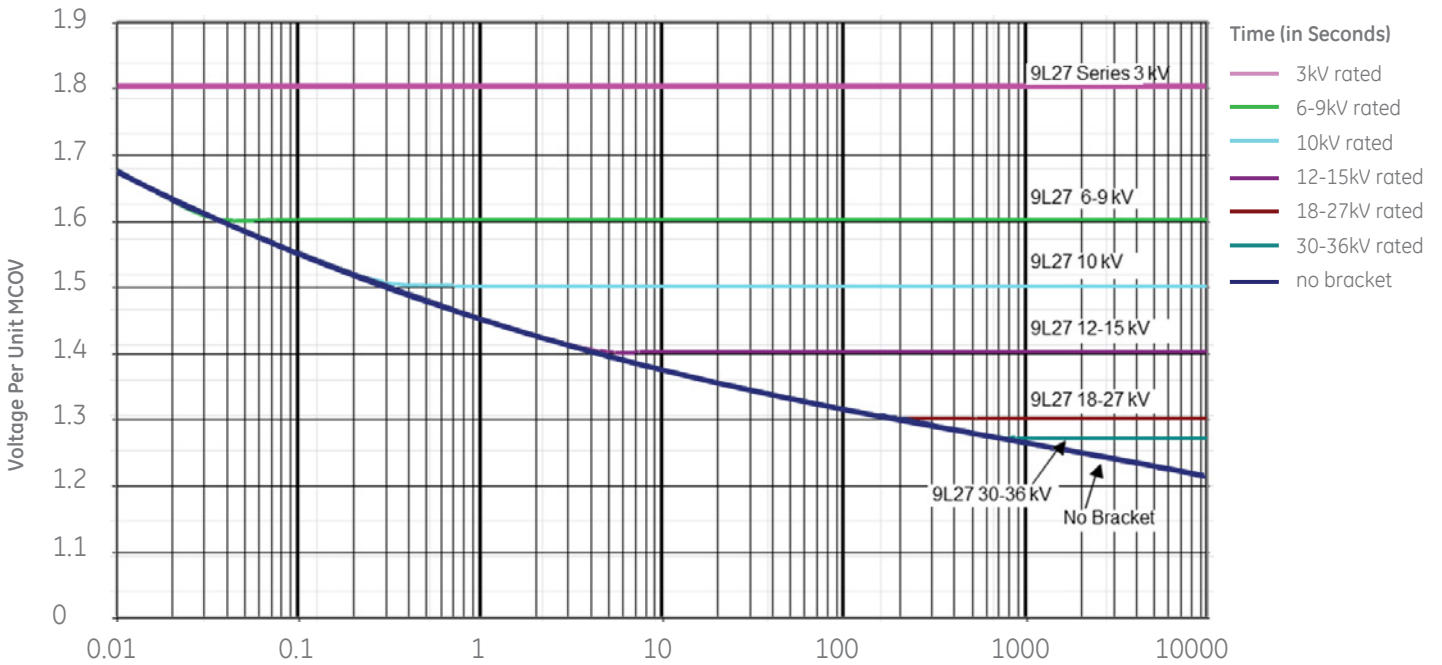
Insulating Bracket/Bird Cap/Disconnect



Insulating Bracket/Cross-arm Bracket/  
Bird Cap/Disconnect

## Riser Pole Arresters – 9L27 Series - TOV

### ANSI TOV (No Prior Duty) for 9L27FXX Series Polymer Riser Pole Arresters





Digital Energy  
Capacitor & Power Quality Products  
381 Broadway  
Ft Edward, NY 12828  
(518) 746-5750

[GEDigitalEnergy.com](http://GEDigitalEnergy.com)

ANSI is a registered trademark of American National Standards Institute, Incorporated. IEC is a registered trademark of Commission Electrotechnique Internationale. IEEE is a registered trademark of the Institute of Electrical Electronics Engineers, Inc.

GE Digital Energy reserves the right to make changes to specifications of products described at any time without notice and without obligation to notify any person of such changes.

GE, the GE monogram and TRANQUILL are trademarks of General Electric Company.

Copyright 2013, General Electric Company.