



HMI ADDITION FOR PROPULSION DRIVE SYSTEM

Human Machine Interface (HMI) addition for comprehensive propulsion data at wheelhouse

Beneficial interface technology

The propulsion data is like a heartbeat of a marine vessel. This is monitored limitedly by standard remote-control interface that contains pushbuttons, indicators and a set of HMIs connected on the same remote-control loop with partial propulsion data to wheelhouse crew. Hence the crew is highly depending on Engine Control Room(ECR) engineers to get more necessary propulsion data, which delays the quick decisions during critical events.

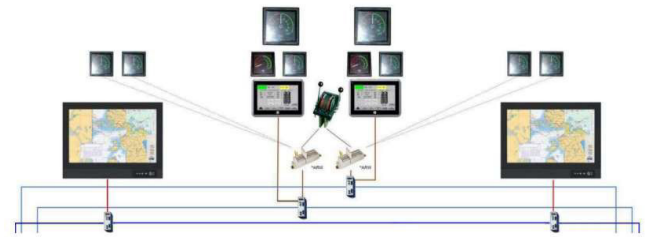
Power Conversion & Storage (PCS) - a GE Vernova's business - understands your needs and recommends to add a new remote-control loop between Process cabinets and Wheelhouse with single or a pair of HMI which are identical to those placed in ECR.

The PCS advantage

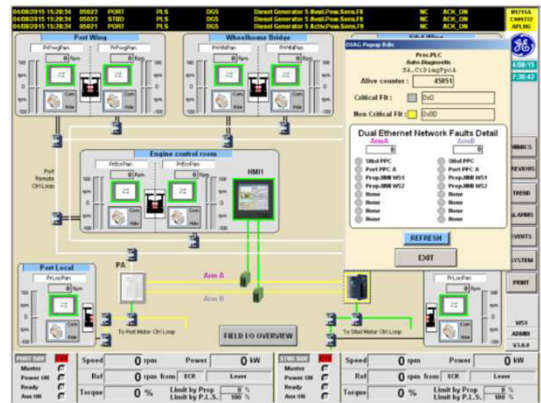
- Thanks to this new HMI, ECR and wheelhouse team will have same information level instantaneously and will make communication and decision easier.
- Thanks to versatile functionalities, new HMI addition enables you to get various instant technical data about propulsion system to wheelhouse crew from a solitary panel.
- Added redundancy to remote control system.

Salient points

- It is applicable to all propulsion system without HMI on wheelhouse.
- Field Service Engineer (FSE) implementation time on site will be 2 to 5 FSE days / vessel depending on no of HMI added and vessel configuration.
- PCS recommends to add this HMI addition during the next dry dock.



New HMI topology



HMI Screen

Key features

- Addition of new HMI depending on the space available on wheelhouse.
- The optical remote-control loop would be extended until wheelhouse.
- Wide LCD display enables you to get comfortable data visualization.
- This option requires a site study to confirm the feasibility.

PCS's services for a lifetime

PCS offers bespoke service support in the form of spares and replacement parts, onsite and remote technical support, maintenance services, upgrades, customized trainings and agreements aimed at supporting customers based on their unique needs.

CONTACT US:
services.powerconversion@ge.com

