



GE VERNOVA

ARC FLASH PROTECTION KIT

Reliable Protection for Wind Turbine 3.0MW Converter Systems

Wind turbines operate in complex environments where safety and reliability are critical. The Arc Flash Protection Kit of Power Conversion & Storage (PCS), a GE Vernova's business, is engineered to provide advanced protection for the converter systems in wind turbines.

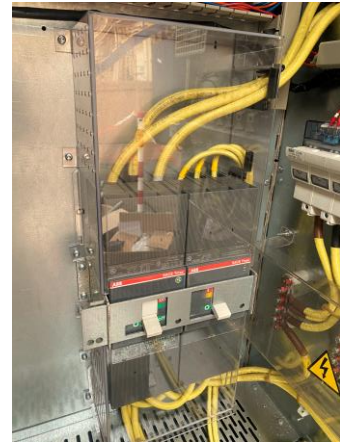
Designed specifically for the 3.0MW converter models, this kit ensures that essential systems remain shielded from arc flash hazards, ensuring consistent performance while promoting a safer working environment.

Why choose the PCS's Arc Flash Protection Kit 3.0MW?

- **Reliable Performance:** This kit offers a tailored solution to keep your wind turbine operating smoothly and safely
- **Enhanced Safety for Critical Systems:** Protect the essential auxiliary power systems in wind turbines from potential arc flash risks
- **Additional Physical protection:** Shrouds provide additional physical protection at critical connection points, reducing the risk of accidental contact and arc flash exposure, further enhancing safety.
- **Limit Fault Energy:** Upstream in-line fuses minimizes fault energy at the incoming terminals of MCB Q2 by limiting the electrical current during fault conditions, ensuring better control over electrical faults.

Arc Flash Protection Kit 3.0MW components:

This kit includes two protective shrouds for MCBs Q2 and Q3, securely mounted to the rear control cubicle panel, and an additional upstream in-line fuse panel.



MCB shrouds



Auxiliary Supply Fuses

** Upstream in-line fuses are optional.*

CONTACT US

services.powerconversion@ge.com