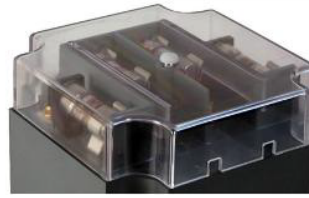


MODELS 460IF & 460IFF

Voltage Transformers

IEC Rated 50 Hz



Clear Plastic Cover



Application

50 Hz.

Standard Secondary Voltage

110 Volts.

Insulation Level

0.72 kV

Accuracy Class

0.5 @ 10 VA.

1.0 @ 20 VA.

Thermal Rating

125 VA at 30°C. amb.

75 VA at 55°C. amb.

Terminals are brass screws ASA 8-32 with one lockwasher and flatwasher.

Approximate weight 3.5 kg

460IF & 460IFF

CATALOG NUMBER		VOLTAGE RATING	TURNS RATING	REC. PRIMARY FUSE RATING
PRIMARY FUSES ONLY	PRIMARY AND SECONDARY FUSES			
460I-110F	460I-110FF	110:110	1:1	3 amp.
460I-220F	460I-220FF	220:110	2:1	2 amp
460I-380F	460I-380FF	380:110	3.45:1	1 amp.
460I-400F	460I-400FF	400:110	3.64:1	1 amp.
460I-416F	460I-416FF	416:110	3.78:1	1 amp.
460I-440F	460I-440FF	440:110	4:1	1 amp.

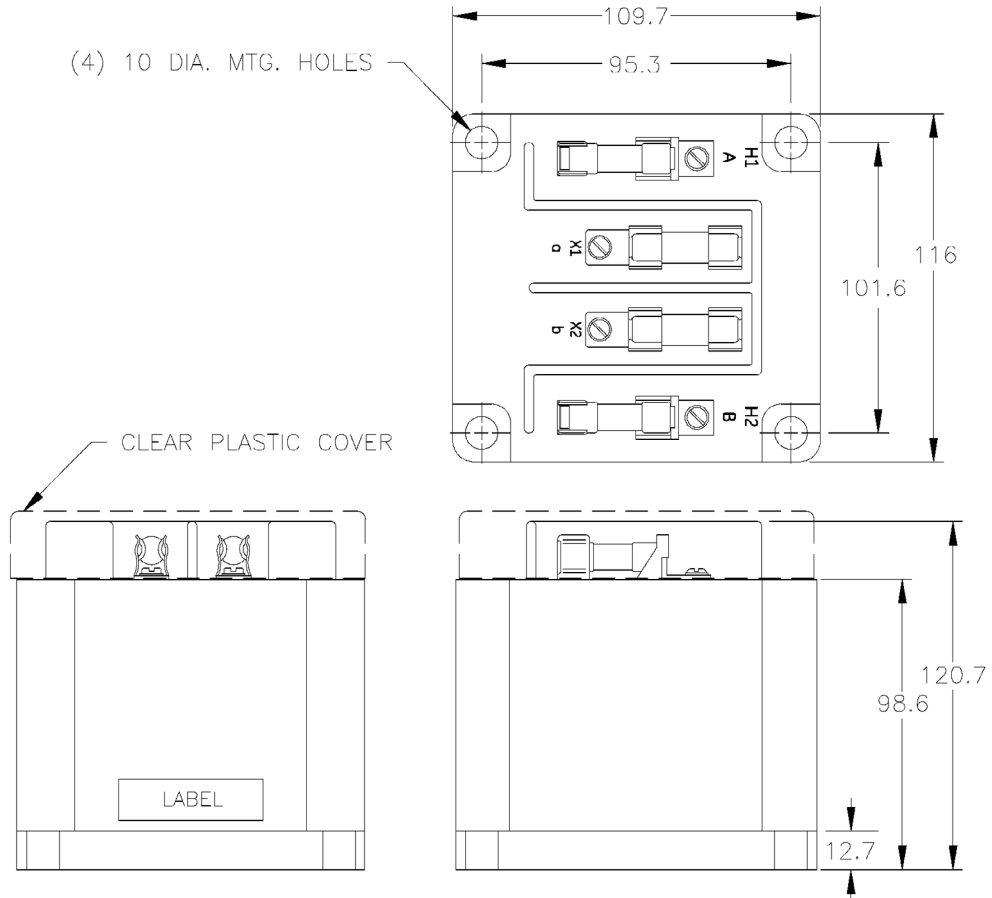
Above part numbers are available with 100 volt secondaries.



Model 460IF & 460IFF

- The core and coil assembly is encased in a thermoplastic shell and filled with resin.
- These transformers are designed for operation line-to-line. They may also be operated line-to-ground or line-to-neutral at reduced voltage (58 % of rated volts).
- It is desirable to use a 1.75 Amp BBS type or equal fuse in the secondary to protect the transformer.
- Primary fuses are class CC rejection type.

Dimensions in mm



For more information, visit
governova.com/grid-solutions

Instrument Transformers LLC reserve the right to change specifications of described products at any time without notice and without obligation to notify any person of such changes.

© 2025 GE Vernova and/or its affiliates. All rights reserved. GE and the GE Monogram are trademarks of General Electric Company used under trademark license.



GE VERNOVA

GEA-N50611
English
251017